

kumeu

# Courier

FREE monthly community magazine for Kumeu & districts

EVENTS AND UPDATES

FUTURE KUMEU UPDATE

- Safer communities
- Food & beverage
- Home & garden
- Property market report

CHRISTMAS AT THE KUMEU SHOWGROUNDS

Circulation is 10,000 print copies and 3371 opened and read email copies.  
Editorial contributions are free from cost. Advertising starts at \$100 plus gst for a business card size.  
Contact Geoff Dobson on 027 757 8251 or [geoffdobson2017@gmail.com](mailto:geoffdobson2017@gmail.com)

December 2022



## Greetings

It's nearly Christmas!

And I can't wait after another COVID-dogged year (I've escaped the virus so far but know plenty who've been hit), although things have been getting back to a near-normal.

We've barely started Christmas shopping, although I'm told some people have already almost completed theirs.

The talk is that much of next year could be economically tough (and I thought this year was bad enough with prices rising almost everywhere and the cost of just living increasing).

So I'm hoping next year and beyond won't be as bad as some are painting.

Anyway, there's plenty of events happening out here that should keep me occupied – see this issue for some of them.

They include the second Kumeu Rotary Christmas at the Showgrounds on Friday December 2 with Kumeu Showgrounds gates open from 4.30pm.

Santa will arrive by helicopter – remember there's no Christmas parade through Kumeu anymore.

Plenty of entertainment, food trucks and a twilight market are offered, with showgrounds entry and parking free – see this issue for more information.

Then there's the 50th Auckland Folk Festival on Auckland Anniversary Weekend at the Kumeu Showgrounds – also included inside.

All the stuff around climate change has me concerned almost as much as the renewed traffic congestion around the Kumeu district.

While writing this it rained heavily again with some surface flooding (including on roads around the area). Good for the water tanks but I'm waiting for the sun to reappear.

Hopefully it will be sunny this Christmas and through summer – so long as it doesn't lead to a summer of drought.

I'm already tucking into local strawberries! And looking forward to my Christmas gifts and a season of goodwill.

From the Kumeu Courier team, have a great Christmas and a happy New Year.

Geoff Dobson, Editor



# What's inside

- 3** People & Places
- 9** Safer Communities
- 10** Community News
- 12** Flippin Fun
- 14** In brief: Updates
- 16** Craigweil House
- 18** Property News
- 20** Property Statistics
- 22** Property Market
- 24** G.J. Gardner
- 26** Hot Property
- 28** Home & Garden
- 30** LED Lighting
- 32** Maddren Homes
- 34** Central's Tips
- 36** Food & Beverage
- 38** Health & Beauty
- 40** Dental Implants
- 42** Area Columnists
- 44** Kumeu Library
- 46** Travel is back

### ENQUIRIES / FEEDBACK:

Geoff Dobson

P 027 757 8251

E [geoffdobson2017@gmail.com](mailto:geoffdobson2017@gmail.com)

W [www.kumeucourier.co.nz](http://www.kumeucourier.co.nz)

COVER PHOTO: Christmas at the Showgrounds, by Ali Lister Photography NZ

PRINT RUN: 10,000 copies, Treehouse Print

EMAIL DATABASE: Sublime NZ

DISCLAIMER: Articles published are submitted by individual entities and should not be taken as reflecting the editorial views of this magazine or the publishers of The Kumeu Courier Limited. Articles are not to be re-published unless written consent is granted from the publisher (Graham McIntyre).

# People & Places

## Christmas at the Kumeu Showgrounds

The second Kumeu Rotary Christmas at the Showgrounds is on Friday December 2 from 4.30pm after COVID interrupted last year's event.

Thousands of people are expected at the showgrounds for the free evening, with Santa due to arrive by helicopter.

No parade through Huapai and Kumeu is planned, with the showgrounds hosting the Christmas event instead.

Schools, pre-schools and others will provide entertainment from 5pm, mainly through performances on the main stage.

About 25 food trucks, a Twilight Market featuring more than 60 stalls selling a variety of goods; rides, face painting provided by Atlas Concrete, and heaps of giveaways will be available.

Giveaways include products from New World Kumeu and Arnott's Biscuits, while emergency services will be on display too.

Show manager Lizelle Westman expects plenty of interest in this year's event which is geared especially for families.

She encourages people to use the Waitakere Road showgrounds entrance (Gate 9) to avoid congestion.

Kumeu Rotary members will be helping with parking, with plenty of



free parking on site.

Christmas at the Showgrounds is expected to finish around 10pm.

Search Facebook, visit [www.kumeushowgrounds.com](http://www.kumeushowgrounds.com) or phone 09 412 9322 for more information.

## 50th Auckland Folk Festival in January

The Auckland Folk Festival commemorates 50 years with a huge three-day celebration at the Kumeu Showgrounds during Auckland Anniversary Weekend, January 27-30.

New Zealand's largest folk festival is back and better than ever, with 2023 promising a very special occasion as the festival celebrates half a century of togetherness, music and dance, say organisers.

The festival team is anticipating the 50th event to be the biggest folk festival in New Zealand's history with thousands expected to flood through the gates.

"After two years of restrictions we are delighted to announce that we are expecting a wide variety of artists from New Zealand and abroad this year," organisers add.

Visual, musical and other tributes will help celebrate the festival's



Come and join us at Nature's Explorers Kindergarten - the best kindy ever!

**Your child will thrive at Nature's Explorers. Here are a few reasons why:**

- Our warm and caring nature based learning environment
- Specialist early education and low teacher/child ratio
- Gorgeous home-like environment

**8 weeks half price fees**  
On all new enrolments

Visitors welcome at our beautiful kindergarten, visit or call us today  
**09 412 8800**

[www.naturesexplorers.co.nz](http://www.naturesexplorers.co.nz)

**1 Maude St, Riverhead**



# People & Places

diverse history.

More than 23 acts are scheduled, many of them international and local artists.

These include Melbourne-based Folk Bitch Trio, Edinburgh-based The Jellyman's Daughter, Te Kaahu, Sneaky Bones (Matthew Bean) from the USA, Irish fiddle player Manus McGuire, Australia's We Mavericks, Kerry Fields, The Frank Burkitt Band, Wheel of Experience, Albi & The Wolves, Criu, Tui Mamaki, Monty Bevins, Alpaca Social Club, Across the Great Divide, Rough Town and Butter Wouldn't Melt.

Traditional dance performance and song writing competitions, dancing workshops for those who want to 'give it a go', children's concerts and sessions along with plenty of space to relax and enjoy the surroundings are on offer too.

Camping, stalls, food trucks, free showers and toilets are included.

The Kids Stage is again a huge part of the festival, especially for the many families that camp out all weekend. A youth orchestra takes over the Kids Zone on Saturday afternoon and a family picnic, kids dance and night-time tales closes out the day.

Sunday kicks off with a series of concerts before instrument making and a parade.

Children under 10 are free all weekend.

All marquees are covered but open sided.

The festival will be monitoring any government announcements or regulations for gatherings and will ensure a safe environment for all.

Visit [www.aucklandfolkfestival.co.nz](http://www.aucklandfolkfestival.co.nz) or search Facebook and Instagram for more information.

## Riverhead School 150th

Hundreds of people helped celebrate Riverhead School's 150-year sesquicentennial in November.

From the 300 past and present community members attending the 'Ode to the Old Girl School Building to the 96 attendees who gathered for the Dinner and Dance at The Riverhead on Saturday evening, a lot of reunions and friendships were rekindled from years gone by - and that was only the first day.

The second day of events was just as big with about 700 visitors



making their way throughout the day to the Riverhead School Celebrations on the Sunday.

Starting at 8.25am, it kicked off with an official powhiri which welcomed manuhiri including past principals Brenda Drew and Hare Paniora.

Past students were able to remake old class photos while present students showcased some of their recent operetta dance performances.

Food was shared, games were played and new friendships were created.

Riverhead School was the connection that everyone had in common, with the eldest student Mary Papa (100) and the youngest Riverhead School student Birdie Paewai (five) honouring the events by cutting the sesquicentennial cake alongside present principal Kris Hughes who believes the 150th anniversary event will be talked about for many years to come.

Sesquicentennial organisers are preparing to publish the "Riverhead School Remembrance" book which will show all of the history displayed at the anniversary events along with photos of the weekend.

Email [150years@riverhead.school.nz](mailto:150years@riverhead.school.nz) to get your name on the list for notification of when the book goes on sale.

## In an octogenarian's garden

All Handyman Works' director Paul Crouth of Muriwai is on a mission to provide beautiful gardens.

He's working with his team of four on a local project to both stabilise and beautify a horseshoe-shaped steep bank for Robert and Carole Hoy.



No expense has been spared on a huge variety of flowering plants for the 1500 square metre property, although Paul says they have made the project affordable for Robert and Carole.

"Cindy, our garden design consultant, with myself sourced the plants at affordable wholesalers and Cindy has experience and qualifications in garden design and colour," he explains.

"My other team members with myself planted, weeded and put down weed mat (to prevent weeds and for low maintenance) - our experienced team members putting in 100% effort to please the

**Geoff Dobson**  
MEDIA

P 027 757 8251

E [geoffdobson2017@gmail.com](mailto:geoffdobson2017@gmail.com)



**KUMEU TYRES LTD**  
Main Road, Kumeu

New Tyres  
Truck Retreads  
Used tyres

Wheel Alignments  
Great Service  
Fleet service

**Phone Neil 09 412 9856**

# People & Places

clients."

The mixture of plants are mainly long-lasting perennials and ground cover daisies for structure and coverage, Paul adds.

Plants include other ground cover, coastal loving ice plants, bromeliads, gazanias (African daisies), native flaxes (which attract tui), cabbage trees, and many more.

Much of the bank now just needs finishing touches, including some bark mulch (mainly cambium which sits firmly in the ground to prevent being washed away).

Pipes from a septic solutions system help provide water.

Robert, 83, and wife Carole, 79, are passionate gardeners and help where they can, including mowing which Robert says contributes to his fitness. He's also made many of the plant containers around the property.

The couple moved there from Te Atatu more than 10 years ago and love the area.

Paul says the bank garden is very special with plenty of colour and is a tribute to Robert and Carole's gardening passion.

## West Coast winners

COVID might have curtailed last year's efforts by the West Coast Rangers Football Club (WCRFC) under-19 girls' team to get in the biggest and most prestigious annual under-19 youth tournament in New Zealand, but the team was victorious this time.

Auckland teams were stopped from travelling to Napier last year for the Labour Weekend event which sees more than 130 games of football at the Napier City Rovers-hosted tournament at Park Island Recreation Ground, along with their Bluewater Stadium.

Some of the biggest clubs from throughout New Zealand compete for the boys' and girls' trophy to be crowned national under-19 champions. Many young players who have played in the tournament have gone on to gain international status.

The WCRFC girls' team of 18 was selected mid-September after trials and practices.

Positions were fiercely contested as the club has seen double digit percentage growth each year following the successful amalgamation of the Norwest United and Waitakere City clubs two years ago.



WCRFC had more than 100 football teams competing this season.

The girls' under-19 team had 11 players returning from the team named last year but, probably more importantly, had eight players in the premier women's team playing in the Northern Regional Football League (NRFL) Women's Premier Division.

The team was coached by WCRFC Football Director Andy Dunn, supported by Nic Clapson and Kailey Short as Assistant Coaches.

Mark and Tanja Lyon plus Jane Bailey along with Jo Peel the team physio completed the management team.

The team trained twice a week plus had two warm-up games, so were ready to fire by Labour Weekend.

Mark was quoted last year saying: "The under-19s are a very progressive team with a mix of youth and experience and could bring back a trophy from Napier."

Would that be the case this year?

The team had also been busy fundraising to cover the estimated \$13,500 cost of the attending the recent under-19 national tournament.

New World Kumeu, a big supporter of the club and girls, donated a three-minute grocery grab with three raffle prizes of \$500, \$300 and \$200.

Mark says the uptake to support the girls and the team has been amazing. The lucky prize winners were drawn on the Friday the team travelled to Napier.

Saturday October 22 saw the start of the tournament with the girls playing three pool games, winning all against Petone (4-nil), Wairarapa (6-nil) and Fencibles (3-1).

The Saturday night included a WCRFC barbeque for the many parents who had travelled to Napier to support their daughters. Sunday saw another two pool games, winning both against Lakes (6-1) and Havelock North (4-nil) and qualifying top of their pool meaning a 5pm quarter final against Otumoetai.

The WCRFC girls took the lead after a couple of minutes through an own goal. The second half saw another goal added through a penalty shortly after the start, making the final score 2-nil to WCRFC.

### ANYTIME PEST CONTROL

FLIES, ANTS, COCKROACHES, FLEAS

RATS, MICE, SPIDERS, WASPS ETC.

WEEDSPRAYING

**KEVIN MORRIS** REGISTERED TECHNICIAN

PHONE: 09 411 7400 MOBILE: 027 277 7143

## Tile Wright®

- Bathrooms
- Kitchens
- Splash Backs
- Waterproofing

**Josh Wright**

027 260 8225

Tilewright@outlook.com

# People & Places

Monday saw an 8am semi-final against Wellington Phoenix.

WCRFC played with a strong wind behind in the first half and were up 1-nil. The second half saw Rangers score early for 2-nil but the Phoenix got one back to make it a nervous final 15 minutes.

Then it was on the final against Ellerslie played in the Bluewater Stadium at 11am.

WCRFC scored mid-way through the first half and another goal shortly after to take a 2-nil lead into halftime. With both teams having already played seven games the toll was starting to show, particularly on Ellerslie.

The second half saw another goal to Rangers and fantastic defence didn't let Ellerslie manage any shots at goal.

The 3-nil win meant the WCRFC girls were the national under-19 champions, with each player receiving a gold medal and captain Ashleigh Bindon taking the trophy and speaking on behalf of the team.

Rosie Gudopp was awarded the Golden Gloves with only three goals going past her in eight games, and Emily Lyon received the Golden Boot award for most goals scored in the tournament - six.

Overall, WCRFC Rangers scored 30 goals in the eight games they played, with 11 individual goal scorers showing the team's depth.

The team arrived back at Fred Taylor Park singing "We are the champions" (by Queen) to about 30 people welcoming them home.

## New Kumeu choir director sought

Margaret Lindsay has always been a singer - now she's retiring as Kumeu Blend conductor after nearly 30 years. Her first role was in the Sound of Music at Avondale Intermediate. In teenage years, she was a regular performer in clubs and festivals around Auckland.



Her musical direction took a change at Teachers' Training School when she won a scholarship to study classical singing. That year she was accepted as a chorus member in the Perkel Opera production of Tosca. The following year she took the role of Hodel in "Fiddler on the Roof" in Tauranga.

After overseas travel and starting a family, Margaret started serious

study to gain her Fellowship from Trinity College London. She was a member of Auckland Opera Company for many years.

Margaret was asked to join the Kumeu Country Women's Institute Choir by her singing teacher, Beatrice Webster, who was the previous conductor. Beatrice was a well-known singing teacher in New Zealand, and she was the wife of local Kumeu GP Bill Webster.

On her retirement, Beatrice passed the baton to Margaret in the early 1990s.

Under Margaret's tutelage, the choir regularly won first prize in many competitions.

In 2000, the choir changed its name to Kumeu Blend with the introduction of male voices.

As a larger community choir, a wider repertoire was possible and covered a range of musical styles including opera choruses and oratorio. The emphasis was on constant development, while challenging the singers and extending their vocal skills.

Every year Kumeu Blend produced a mid-winter concert, and a Christmas Concert at St Chads Church. The choir was frequently invited to perform as guest performers in concerts throughout the city.

The last two years were difficult for New Zealand choirs because of the COVID-19 pandemic. But with the loyal support of its members, Kumeu Blend managed to survive where many other choirs didn't. Numbers, however, have diminished and the task now is to rebuild.

Regrettably, after almost 30 years on the podium, Margaret is resigning hoping for more time to visit family, and feeling that it was now time for the choir to have new leadership.

The choir will continue, and it looks forward to attracting new members. The search for a new conductor has begun, and Kumeu Blend is also seeking new members.

Interested applicants for musical director should contact Margaret (Margaret@lindsays.co.nz) while singers should contact Lynette Webb (lynette.webb@tandem.org.nz).

## Auckland JPs mark 100 years

The Auckland Justices of the Peace Association was founded in October 1922 to provide a connection for its JPs that would promote consistency, training, and coordination of services throughout the Auckland district.

It now has more than 1300 members of which 18 are in the NorthWest area of Riverhead, Kumeu, Huapai. Taupaki and Huapai.

JPs are not lawyers but receive comprehensive training at the time



**MURIWAI GOLF LINKS**

**Andrew Jackson**  
General Manager

Mobile: 021 2253907 Ph: 09 4118454  
muriwai.manager@golf.co.nz www.muriwaigolfclub.co.nz  
P O Box 45 Waimauku 0842, Auckland, New Zealand

QUALITY WATER



SUPPLIES  
7 DAYS  
PHONE NOW!  
Bev & Andrew  
Speedy

Registered by Ministry of  
Health & Auckland Council  
Fresh Water Supplies

Ph. 411.8116

Txt 027.345.3805

# People & Places

of their appointment and keep up to date by attending regular training sessions throughout the year.

In sharp contrast to 1922, present day Auckland JPs assist a much more diverse society, meeting the demand by taking its services to the community at 60 local service desks in shopping malls, community centres and CABs.

Well in excess of a million documents were processed last year by JPs at no charge.

Auckland's Northwest JP service desk is at the Kumeu Library in Huapai every Saturday between 10am and noon, with no need to make an appointment.

A JP can witness signatures on documents and certify copies of documents as true copies of originals or original images viewable on a computer or smartphone screen. They also take declarations for documents requiring a Statutory Declaration and administer oaths or affirmations on court related documents requiring an affidavit.

Some of the documents commonly presented requiring Statutory Declarations relate to immigration matters such as sponsorship, bank documents, change of name, KiwiSaver withdrawals, insurance claims, housing, rates rebate applications, and more.

Certification of photos as being a true likeness are common, particularly for reasons relating to financial process and the Money Laundering Act. Other tasks include the dissolution of marriage, certifying that people receiving overseas pensions are still alive, and a name change. JPs can also perform citizenship ceremonies if especially requested.

There are some things people needing a JP need to note.

If they want a printed copy of an original to be certified, they must bring that original with them, or be able to show it on their smartphone screen. If the document copy is being certified for identity requirements, that person must personally bring the documents for JP certification.

For Affidavits or Statutory Declarations, the person making the declaration must be present. You can't do this for someone else. Bring your photo ID, for example a driver's licence or passport, with you so the JP can confirm you are the person making the declaration.

Make sure the form is fully filled out and avoid signing the form before you come and do this in front of the JP.

JPs in the Northwest are also happy to also provide services at their homes. You need to telephone first and make an appointment.

Names and contact details of JPs can be found on the JP Association website, visit [jpaukland.org.nz](http://jpaukland.org.nz) and search "find a JP".

A regular JP service is also available each weekday 1pm-3pm at the Massey CAB in the Massey Library (Te Manawa) and at the Northwest Mall on Thursdays 6pm-8pm and Saturday 10am-noon. By Kumeu

JP service desk organiser Clive Preston-Thomas JP.

## Future-Kumeu Updates

By members of Future Kumeu.

There has been significant work that has been done over the last month in support of Future-Kumeu and understanding the best ability to fight stupidity with common sense. Supporting Growth and their process is a co-share arrangement between two of the most untrusted organisations in New Zealand. Our ability to get information out of these organizations through the Official Information Act has been reminiscent of a teacher at a pre-school asking two 4 year old boys who stole the cookies from the tin in the staffroom. Nothing submitted or heavily retracted papers provided by A-C and W-K making the sub-committee at Future-Kumeu very nervous indeed. If you are effected by a Notice of Requirement from supporting Growth, you are stuck in SH16's carpark twice a day, or are concerned about the lack of flood mitigation in the community, please ensure you register your interest in this project on the web site [www.futurekumeu.nz](http://www.futurekumeu.nz) This is what we understand of the time-line moving forward:

The Process: (in approximate time frames).

1. W-K (Waka Kotahi)/ A-T (Auckland Transport) = S-G (Supporting Growth)

Supporting Growth issue NOR's to A-C (Auckland Council) 16th December 2022.

2. A-C notify intent of NOR's to. Landowners March - April 2023

Then followed by Public Submissions.

3. Hearings on Public Submissions June - August 2023.

4. A-C deliver recommendation last quarter of 2023 and formal NOR's are issued.

5. Steering Group decision first quarter 2024, which leads to rights of appeal last 2 quarters 2024.

6. A-C amends it's District plan.

Kumeu, be under no illusion, if Supporting Growth get this plan approved and implemented we can guarantee that the congestion will get worse, flood impacts will be worse, and the businesses that service this district will be less. In the new year a public engagement program will ask for your support for a better solution and a better Kumeu to be created. Join with us to make this a reality.

Questions to the Website are below and have been answered as best we can (in italics):

**WATER TANK  
CLEANING &  
REPAIRS  
& Solid Plastering**  
*Call* **027 410 8404**

The **Picture Framing Company** LTD.  
*We will frame anything!*



- ✓ Competitive prices
- ✓ Professional Framers
- ✓ Knowledgeable Team
- ✓ Friendly Service
- ✓ Integrity
- ✓ Quality

Established in Kumeu for 20 years  
Ph 412-6224 · [www.pictureframing.co.nz](http://www.pictureframing.co.nz) · 14A Shamrock Drive, Kumeu

# People & Places

1. If the secondary school doesn't come to Station Rd (likely elsewhere, actually) what changes would you make? *We can only make a rational and suggestion based on the best location for our parks and schools but these need to be adopted by Council and Ministry of Education.*

2. NZ will never be a heavy industrial country. The Heavy Industry zones are nonsense. Land agents say that there is demand for light industrial land out west and nil for Heavy. *There was no suggestion that the zones designated Industrial Land was set up specifically to a Heavy Industrial Zone. It was an area that would meet the industrial needs of the community, however if we eliminated the commercial and industrial requirements in the plan for the next 30 years it would be irresponsible and irrational.*

3. If a motel/hotel went there, Council could sub-lease part of the carpark if you think a Park & Ride facility is needed. Why did you place the P&R on the Countryside Living side of the road anyway? *We have a large volume of our district that travels too and through Kumeu on route to other places. Public transport can not effectively reach our scattered population so to have parking available to access efficient public transport makes sense, and operates effectively like this around the world and is future proofed by charging stations at these points. A motel or hotel add on makes good sense.*

4. If you think more Light Industrial zoning is necessary (on top of Westgate and Hobsonville and (soon) Whenuapai), what's wrong with the western side of SH16 from Foster to Waimauku? There are businesses there already and it has little to offer for residential. Next to the Bypass as well. *We appreciate your question but point out that this is a thirty year plan and we envisage a community that will live and work in the same region.*

5. Why do you think we need three Town Centres? Kumeu, Huapai and Trigg? If you believe that the light industrial Western side of SH16 will wither and die. At least one new big build is underway. Business premises have sold this year also in Greville, Loft and Wookey. To move will require a lot of buy-outs and a degree of coercion. All the existing businesses above the Tavern are above any flood risk,

and will stay. Why would they move? Trigg road would seemingly need to become a major thoroughfare? Why is that not shown? *We appreciate the need for detail however this is concept plan, just like supporting growth it requires more work to provide the depth of roadway planning to support its implementation. Businesses in the streets you mention have had flood cover removed from their policies, this signals a change that will ultimately force business to re-assess their risk and their ability to finance another flood event.*

6. Mayor Wayne Brown has made it quite clear that he is 'anti' big spending on cycle/walkways that nobody uses. Why do you think very long such paths would be approved? If Council has no budget for the main expenditure already, why would they buy all the extra land your plan requires for paths and rapid transport through the Countryside Living Zone? *This is a future plan not a start digging tomorrow plan. Kumeu has a history of being developed without a community led center plan and infrastructure plan.*

7. What is the rapid transport mode? Buses? Have you not noticed how empty the buses are during the day? Has AT been asked to divulge passenger numbers? Cars will always be with us, simply powered differently. We have to cater for them. *Supporting Growth has not provided a business case, nor a cost benefit analysis for the investment in the Rapid Transit Corridor. At \$1 Billion dollars to create it may at best service 1000 residents. The by-pass in contrast would have an impact on all public transiting through Kumeu.*

We have lived in the Kumeu district for 25 years, in more than one property, and are still dual property owners. This is a beautiful rural area and we find it quite distressing that anybody would even think of introducing Heavy Industries with all the likely noxious problems. We understand that it might take some years before any sort of common sense plan is put together and, without doubt, as many property owners as possible should/must be involved, residential and commercial, as well as business owners who rent premises in the district.

Why is the council allowing subdividing and permits to build homes on properties when in fact the future road will be going straight through that property. Makes no sense.

A property in Boord Cres has recently been subdivided and privately sold possibly new owners not advised of the future road and now wanting a new home on.

*We have outlined the process above that Supporting Growth are following. There is no formal notification in place at this time, however the process does exist as above to move to NOR to be applied. Land Owners can participate in the hearings process or seek legal advice.*

To ask a question please go to [www.futurekumeu.nz](http://www.futurekumeu.nz) and ask today and we will seek an answer for the website and for Kumeu Courier.

The best of  
**AGED  
CARE**  
2023



**SEMINAR & chat**  
28 February • 10am–12.30pm  
WEST HARBOUR CHURCH, 145 MOIRE ROAD

*Are you considering making the move to retirement living? Don't know where to start, wondering what is on offer? Need support?*

**We will provide the answers and ensure you make this next stage in your life comfortable, easy, simple & enjoyable!**

RSVP today – bookings are limited!  
Call 0800 900 700 or  
EMAIL [editorial@kumeucourier.co.nz](mailto:editorial@kumeucourier.co.nz)



**SERVICE CENTRE**

**EOIN STUART**

Phone 09 412 5900 | Mob 022 639 0274  
338 Main Road Huapai - Kumeu, Auckland 0810  
[autoworxnz@outlook.com](mailto:autoworxnz@outlook.com)



# Safer Communities



## Fire Safety

Christmas is a time of giving and joy, not a time of loss and not a time of tragedy.

Beware the multi-plug cluster this season. When the weather is hot and the power usage through devices is increased your cords and multi-plugs get hot and can create an electrical malfunction or a melt-

down. Ensure you follow the simple rule of one multi-plug per wall plug. This will reduce the likelihood of overloading.

Over Christmas, we have extra cars on the road, extra people on the beaches and many boats out on the water. It is a time to be extra vigilant and take some extra time to check your equipment and some extra time to get to your destination.



WHAKARATONGA IWI

**FIRE  
EMERGENCY**

NEW ZEALAND

Look out for others and don't react to the few idiots that don't follow the rules.

You're better to take a breath than to take matters into your own hands. And on that note, I wish all Fire and Emergency volunteers the very best Christmas and thank you for your patience and understanding this year. Until then, we wish you and yours the very best for the festive season.



**Graham McIntyre**

Chief Fire Officer  
Waitakere Fire Brigade  
Phone 09 810 9251

# CHILL OUT THIS CHRISTMAS

## BUY LOCALLY, SKIP THE TRAFFIC, AVOID THE CROWDS



*NorthWest*  
COUNTRY

KAUKAPAKAPA HELENSVILLE PARAKAI WAIMAUKU HUAPAI KUMEU RIVERHEAD  
[WWW.NORTHWESTCOUNTRY.CO.NZ](http://WWW.NORTHWESTCOUNTRY.CO.NZ)

# Community News

## Dreaming of Christmas

Dreaming of Christmas, Westgate (next to Wet & Forget and Kathmandu) is the best kept secret in Auckland.

WOW what a variety of Christmas trees, centrepieces, nativities and Christmas decor.

We wish to thank all our and Kumeu Courier/Westerly customers that have supported us since our opening a very Merry Christmas and all the best for 2023.

[www.dreamingofchristmas.co.nz](http://www.dreamingofchristmas.co.nz).



## Hospice West Auckland - Trees of Remembrance are back

We are excited to be back in the community this year with our wonderful Trees of Remembrance.

Christmas is often a time when we think of those we have lost and miss dearly. Our community Trees of Remembrance give you the opportunity to remember your loved one by leaving a heartfelt message on our remembrance trees in selected stores around West Auckland. We invite you to make a donation, which will help us in continuing to provide free end-of-life specialist care to our West



### Public Apology

### Advertisement

I, Brent Bailey, at a public meeting of Rodney local body election candidates on 16 September 2022, made several statements to the effect that Craig Walker, was responsible for backfilling land spoil into the river that runs behind his company's premises at 143 Main Road Kumeu.

These statements were entirely incorrect, false, misleading, presented as statements of fact, and they unfairly and unreasonably discredited Craig and disparaged his business reputation. Further, members of the public were unambiguously caused to understand, contrary to fact, that Craig had acted unlawfully, and had caused damage to the waterflow, the river and surrounding land.

These statements were quite simply malicious gossip that should never have been repeated as I have no evidence that supports them. I offer my unreserved apology to Craig.

What I do know of Craig is that he is a passionate and generous contributor and supporter of community projects.

He is a vigorous advocate for improved community facilities, infrastructure, transport and planning for growth. I have ample evidence of these statements.

I hope that Craig will accept my apology and that we can both move on with this matter put firmly behind us. I believe that is still much work to be done and that we can each make a valuable contribution for our community.

Auckland community.

You can make a donation and hang your message on the tree at these stores up until 24th December:

- Bunnings New Lynn, 2/12 Titirangi Road
- Bunnings Westgate, 21 Fred Taylor Drive, Massey
- Pak' n Save, Alderman Drive, Henderson
- New World, 2/6 Crown Lynn Place, New Lynn

## Light up Hospice

Hospice West Auckland is lighting up our community with Christmas spirit. From 1st December, Hospice House at 52 Beach Road, Te Atatu Peninsula, will be ablaze with stunning lights and colours. Every light represents a precious person we have cared for in their final days. Visit Hospice House from 8:00pm until midnight during December and take time to remember those we miss the most. Share your pictures of you and your family visiting the lights and tag us on social media: @hospicewestauk



## What's on at Kumeu Arts

On December the 9th from 4-8pm, Kumeu Arts (just behind the Library) are holding a Christmas Makers Market. Come along and meet some of our makers and buy beautiful art and craft directly from them. This Market coincides with the opening of our Affordable Arts Exhibition which is a large collection of artwork (all for under \$400) spanning both our galleries. This is a great opportunity to support local people while buying ethical and unique hand-made gifts. This month, we have weekend workshops in 'Cold Wax' and 'Colour Strategy'. Creative Matters school holiday workshops also run between 19-21st December. They provide a safe, creative, happy place for your children. Kumeu Arts closes on December the 23rd and reopens on January the 16th. We'd like to wish you all a wonderful Christmas and we look forward to welcoming you back in the new year. For



# Community News

more info visit [www.kumeuarts.org](http://www.kumeuarts.org).

## Kaukapakapa Village Market

Sunday 18 December 8.30am to 1pm. A great opportunity to buy local this Christmas with loads of unique gift ideas from our craft and gift stall holders, as well as fresh produce, artisan food & preserves, plants, books, cakes, doughnuts, ice cream, coffee and much more. Free face painting and hair plaiting, live music from the Cougar Chorus plus Santa and his elves will be visiting.



Our first market of 2023 is on Sunday 15 January - a great way to spend a relaxing holiday morning, plenty of quality stalls, preserves, food, coffee, fresh local produce, live music and much more.

Wishing you all a very Merry Christmas and a happy 2023.

For more information contact Sarah 027 483 1542 or email [sarah@riversidecrafts.co.nz](mailto:sarah@riversidecrafts.co.nz).

## Reid Organics

We are a local family from Waimauku, Jordan, Nicole and our 2yr old son Max. We are a family owned and run company producing an all-natural Baby Bum Spray to use as a much easier and more convenient product to your traditional nappy change cream.



This is our first product released with more in the pipeline. It's designed to be an alternative and direct competitor to traditional nappy/barrier creams, just clean the area then confidently spray Baby Bum Spray and fasten the nappy, simple. No fuss, no need to wash your hands.

Baby Bum Spray is handmade by us here in Waimauku with Organic and Wild Harvested Ingredients.

A little tale about how I created Reid Organics - Baby Bum Spray.

As a new father 6 months into nappy changes I had a thought, this is stupid, why do I have to turn my attention away from my child to

open the nappy cream, smear it on my finger, touch the baby's bum, then spread it all over my fingers? At this point, I either need to wipe my hands or risk getting the cream all over the baby's clothes and legs. Why can't this just be a spray?

That would be safer, simpler, and wouldn't require me to focus away from my child. After looking for a spray nappy cream but finding none, I decided to create my own. The investigation into the ingredients, bottles, correct spray technique, testing on different babies, and the testing and tinkering started. I'm never going back now since it's simpler, cleaner, and safer. And now my eyes are open to many more products that can be part of The Smarter, Simpler Change.

We have a special running at the moment and have a couple of package offers too. We also offer free order pick up for our locals and sometimes even drop off depending on where you live. Check us out on Facebook, Instagram or our website [www.reidorganics.co.nz](http://www.reidorganics.co.nz).

## Happy holidays from the Scouts

As 2022 draws to an end, it's nice to take a moment and look back over the last year and to reflect on the many, and varied, experiences the Scouting community has had.

Apart from a small bump with a lockdown in term one, the Waitoru Scout zone has bounced back from all the lockdowns and finished the year stronger than ever.

We have seen more youth join Scouts this year than in previous years, as both parents/caregivers and youth see what Scouts can offer no matter what age you are.

The scouting movement itself has gone thru considerable change during the past 2 years with the implementation of a more globally aligned youth programme that works well for all youth.

Scouts is one of only a few fully inclusive organisations that caters for all youth and embraces individuals no matter what their religion, cultural beliefs or race and fully supports inclusion and diversity.

But as more youth join Scouts to learn lifelong skills, we do need more adults to support our nine groups in North/West Auckland.



## EARTH MOVING CONTRACTOR

# BOLER

CONSTRUCTION LTD



Driveways, All Drainage, Site Cuts,  
Property Maintenance, Subdivisions,  
Horse Arenas, Footings & Drilling,  
All earth work requirements.  
Laser Equipped.

**Steve** PH: 0274 971 154  
A/H: 411 7177  
E: [bolercorstruction@xtra.co.nz](mailto:bolercorstruction@xtra.co.nz)  
[www.bolercorstruction.co.nz](http://www.bolercorstruction.co.nz)  
Reg Drainlayer: Over 20 yrs Experience



## MURIWAI GOLF LINKS

**Andrew Jackson**  
General Manager

Mobile: 021 2253907 Ph: 09 4118454  
[muriwai.manager@golf.co.nz](mailto:muriwai.manager@golf.co.nz) [www.muriwaigolfclub.co.nz](http://www.muriwaigolfclub.co.nz)  
P O Box 45 Waimauku 0842, Auckland, New Zealand

# Community News

We are not asking for a 10-year commitment, (that would be awesome though!) but if you or someone you know would be able to help us perhaps for a year or so, then the youth can continue to experience Scouts.

2023 is going to be a big year, and Scouts will be out and about fundraising for the 2023-2024 Jamboree at Mystery Creek next Christmas. Thank you to everyone that has supported us this year, and we all look forward to seeing more of you next year. Best wishes for a safe and relaxing Christmas.

Do you want to know more, then head to [www.scouts.nz](http://www.scouts.nz), or email me: [zl.waitoru@zone.scouts.nz](mailto:zl.waitoru@zone.scouts.nz). Craig Paltridge. Waitoru Zone Leader.

## Flippin' Fun gears up for busy holidays and final quarter

Looking for a more stimulating environment for your group function or party? Flippin'Fun's huge mezzanine area is an ideal separate space featuring a large screen TV, ample seating and exclusive toilet facilities making it perfect for large group functions. We're busy taking bookings for end of school year sessions and Christmas parties so for an event your people will talk about for a long time afterwards, contact us now.



Then the long summer school holidays. It's easy in holidays to fall back into the 2-D screen habit. Make sure they get their dose of energy burning fun at Flippin' Fun. Remember children require 90mins of vigorous exercise per day and a one-hour session at Flippin' Fun can burn up to 600 calories.

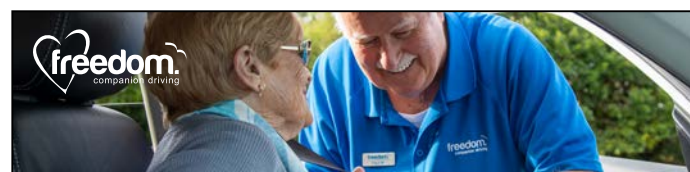
It's not just in normal bounce sessions when you can experience the benefits of trampolining. We have a range of skills and activity classes to suit you and your schedule. Check these out for Term 4 (kindly note, we suspend classes during the holidays)

Flip Fit Classes - with summer on the way it's time to start thinking about getting back that beach bod.

Flip Classes - Fly with the best! For age 8 yrs+. Learn new tricks to impress your friends.

Junior Flippers - a fundamental movements programme for kids aged 5 -7 yrs teaching skills core to many sports.

Little Flippers - a super fun toddler session for the 5 & unders - no older kids allowed.



### Paul Miller

Freedom Drivers Hobsonville

+64 021 321 869 1 (09) 302 2377  
[hobsonville@freedomdrivers.co.nz](mailto:hobsonville@freedomdrivers.co.nz)

- Hospital & Medical Appointments
- Specialist Treatments
- School Transport
- Airport Transfers
- Shopping & Social Trips

ACC Approved • Total Mobility Cards • Eftpos

Need a cool gift idea for your bounce crazy child? We have Christmas Gift 10 entry concession cards (general admission) available in store for only \$140.

For pricing and times be sure to check [www.flippinfun.co.nz](http://www.flippinfun.co.nz) or call us on 09 833 6880. Also follow our Facebook page for summer specials.

## Kumeu Childcare

At Kumeu Childcare children get various opportunities to engage in play experiences and build on to their creativity and imagination. Experiences build connections in the brain, which helps children develop holistically. Teachers advocate child driven and undirected play as children practice decision-making skills, move at their own pace, discover their own areas of interest, and ultimately engage fully in the passions they wish.



We are taking enrolments and specials going on for new enrolment. Please feel free to call or email us on the details below for any enquiry or a friendly visit.

Kumeu Childcare, 7 Wookey Lane, Kumeu. Phone 09 412 8081, email [info@kumeuchildcare.co.nz](mailto:info@kumeuchildcare.co.nz).

## Ensure your tyres keep you safe on your summer road trip

Heading away on a road trip these holidays? The tyres you have on your vehicle (including caravans and trailers) will not only affect the safety of your trip, but also how much fuel you use.



- Check your tyres for any obvious signs of wear and tear - you don't want to see any dents or bulges

- Check the tread depth on the tyre - the minimum requirement is at least 1.5mm around the whole circumference of the tyre

## LiquorLand Kumeū

ASK US ABOUT DELIVERY FOR WEDDINGS, BIRTHDAYS AND SMALL EVENTS

Unit 5 & 6, 1 Putaki Drive | ph. 308 1820

[flybuys](https://www.flybuys.com) [airpoints](https://www.airpoints.com) [I.D. REQUIRED UNDER 25](https://www.id.com) | [liquorland.co.nz](https://www.liquorland.co.nz)

# Community News

• Make sure your tyres are pumped up to the correct PSI - maintaining correct pressure in your tyres will help your tyres last longer and help use less fuel

If your car pulls to the left or right, you feel a vibration while driving, or you have recently hit a pothole or kerb, you may need a wheel alignment. Wheel alignments can also help prevent excess tyre wear and uneven tyre wear, helping your tyres last longer and keeping money in your pocket.

For peace of mind, call into Bridgestone Kumeu and get a free tyre check. You can find us at 43 Main Road, Kumeu.

Wishing you a safe and smooth ride these holidays.

## France – guided tours

We are so excited to travel to France again in 2023. Boutique Tours France, the venture of French/Kiwi locals Catherine and Patsy, organises amazing, guided tours for small groups (max. 8 people) to France.

Catherine and Patsy are both French and take you to those special places. Your guides know France inside out and know what Kiwis like to experience. The tours are fully organised so your travel is carefree: your guides speak the language and look after you. You just happily join the trip with no planning at all.

Book now for an exclusive tour in June 2023. A Taste of Provence. Join us and visit the South of France - 14 days of culture, shopping, food, wine and experiences in beautiful Provence. We start in the walled city of Avignon, stay a week in a gorgeous French Farmhouse with swimming pool and private French chef, and explore the beautiful villages of Lourmarin, Menerbes, L'Isle-sur-la-Sorgue, Roussillon, Gordes and St Remy de Provence to name a few.

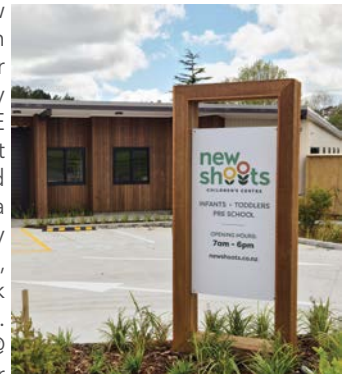
From Normandy to Brittany. We take you to the picturesque coastlines of Normandy and Brittany in the North-West of France. We visit picturesque villages like Honfleur, St Malo, and Mont St Michel. Admire the medieval Bayeux Tapestry, visit Omaha Landing



beaches. Enjoy the Pink Granite Coast in Brittany and dream away in Pont Aven. Visit regional craft, food and antique markets and enjoy our selection of carefully chosen charming Hotels. [www.boutiquetoursfrance.co.nz](http://www.boutiquetoursfrance.co.nz).

## New Shoots Coatesville

New Shoots Coatesville is now open and will be having an open day on Saturday 3rd December from 10am - 12:30pm. They invite local families and ECE professionals to come and visit the centre, have a look around and meet the Centre Director Nicola and her team. They are currently taking enrolments for infants, toddlers and preschoolers. Check out their website [www.newshoots.co.nz](http://www.newshoots.co.nz) or email [Coatesville@newshoots.co.nz](mailto:Coatesville@newshoots.co.nz) for further information.



## Pohutukawa Singers

Christmas and more! A selection of Yuletide and other music.

Friday 2nd December - 7:30pm, Albany Presbyterian Church.

Sunday 4th December - 4pm, St Chad's Anglican Church, Huapai.

\$15 presale, \$20 door sales (cash only). Children - gold Coin Donation. Ticket price includes refreshments. Presales from any choir member or email [candcnewel@gmail.com](mailto:candcnewel@gmail.com) or phone Geoff Collins on 021 170 6590.



**Christmas and more!**  
a selection of Yuletide and other music

Friday 2 Dec 7.30pm  
Albany Presbyterian Church  
Sunday 4 Dec 4pm  
St Chad's Anglican, Huapai

\$15 presale \$20 door sales (cash only)

Children - Gold Coin Donation

Ticket price includes refreshments

Presales: from any choir member

or [candcnewel@gmail.com](mailto:candcnewel@gmail.com)

or Geoff Collins 021 170 6590

The choir greatly appreciates the support of



PINEHURST SCHOOL

# new shoots

CHILDREN'S CENTRE

INFANTS TODDLERS PRE SCHOOL

## Coatesville Centre OPEN NOW

Enquire or book a tour today  
[www.newshoots.co.nz](http://www.newshoots.co.nz)



Quality teacher to  
child ratios

Fees include nappies, meals,  
wetbag, bag and hat

A purpose built and richly  
resourced centre,  
inspired by nature

Ph: 304 0030

302 Coatesville Riverhead Highway

# In Brief

## Farewell 2022 and welcome 2023

2022 has seen another year of changes with still more changes and challenges ahead as we return to pre-Covid times. Despite everything, let us try not to look at 2022 in a negative manner but instead try to look at the positive things that have come out of it.

The events of 2022 have given us the opportunity to take further look at ourselves and see what further changes we can make in our lives. Some people have taken time out for ourselves to self analyse and see what changes we need to make in order to enhance our lives as we move into 2023.

What will 2023 bring? That's a good question, we can only hope that it will be an easier year than the past couple of years. It can be a year where we can continue with any new habits we have developed and look for any opportunities to learn new things and have new experiences.

Astramana™ Healing Services can help you move into the new year by offering you the opportunity to learn new skills such as Reiki, this will help you to give back to yourself and to help others, maybe an opportunity to set up your own business.

Learning Reiki is great for those who are massage therapists and anyone who has interest in Energy Healing. At Astramana™ Healing Services, we are certified in several forms of Reiki and Seichem and can teach these to Master-Teacher levels. For those that are curious to look into the future or see what has been happening, we offer Tarot readings. Have you considered exploring and heal



the past, why not try a Past Life Regression or even a Life Between Lives Regression, where you can get some answers to some soul-searching questions. If you have a fear or phobia, such as flying, spiders etc., why not try Hypnosis to overcome that fear or phobia? Let's make 2023 a positive year for all.

We have some new exciting services and courses that will be available to you in 2023 and now we are post-Covid we will be offering in person classes and workshops.

Astramana™ Healing Services, was founded by International Hypnotist, Reiki Master-Teacher, Clairvoyant & Tarot Reader Jason Mackenzie. Please visit our website: [www.astramana.com](http://www.astramana.com) or email [astramana@gmail.com](mailto:astramana@gmail.com), phone/ text us on 021 0277 0836 with any questions or to book a session, workshop or a New Year's Tarot reading. We offer a mobile service to those out West Auckland.

We look forward to working with you and we wish you all a very Merry Christmas and Happy Holidays, all the best for 2023. Finally, we look forward to welcoming back our current clients and look forward to meeting our future clients in 2023.

## December at St Chad's

In addition to our regular 10am Sunday services we have a number of great events as we celebrate the season of Advent and look forward to Christmas.

Don't forget that KidsZone runs every Sunday during our morning worship.

1 Dec 9.30-10.30 A new Christian Meditation and contemplative study for the season of Advent. All welcome with no previous experience of meditation needed - on 1st, 8th, 15th & 22nd

4 Dec 10am A family communion service especially aimed towards children

4 Dec 4pm Pohutukawa Singers Concert "Christmas and more!" with refreshments afterwards

11 Dec 7pm Kumeu Blend Concert "A Christmas Cocktail of musical delights!" with supper afterwards

24 Dec 7pm A service of 9 Lessons and Carols. Following on from the very successful service last year we once again tell the Christmas story in traditional words and music

25 Dec 10am Christmas Day family communion

For more details on any of these check out the St Chad's website



# ECHO DRAINAGE LTD

**Doug Graham**  
REGISTERED DRAINLAYER  
Telephone 021 416 420

78 Puriri Road, Whenuapai, Auckland 0618

*Done Right. First Time. Guaranteed*

# ECHO DRAINAGE LTD

**Providing a quality professional service in Drainage to the entire Auckland region**

- Commercial Drainage • Domestic Drainage • Septic Tanks
  - Basement Leaks • Waterproofing • Hydro Jetting
  - CCTV Camera (fault finding/locating) • Earthworks
  - Tip Sites • Digger Hire • Tip Truck Hire

**Watercare**  
An Auckland Council Organisation  
WATERCARE APPROVED

[WWW.ECHODRAINAGE.CO.NZ](http://WWW.ECHODRAINAGE.CO.NZ)

# CASTLE PANELBEATING

**mfa**  
ASSURED

**Collision Repair**  
CRA

Grant Castle



P (09) 412 8239

M 027 299 7054

106 Main Road, Kumeu

E [castlepanelbeating@orcon.net.nz](mailto:castlepanelbeating@orcon.net.nz)

# In Brief

www.saintchadshuapai.com or email saintchadshuapai@xtra.co.nz.

## The Trueform Spa Pools Huapai Pro Am

The Trueform Spa Pools Huapai Pro Am presented by Econowaste went off superbly on November 9 at Huapai Golf Club, with promising young New Zealand female professional Momoka Kobori upstaging her male rivals to take out the honours.



The second annual Pro-Am event attracted a superb field of New Zealand professional golfers, playing alongside a sold-out field of amateur teams, with the pro's chasing their share of the \$15,000 prize money and the amateurs their share of over \$30,000 in prizes up for grabs on the day.

Kobori has had a whirlwind start to her professional career, with wins in New Zealand, Australia and Europe since turning pro in January 2021, and can now add the Trueform Spa Pools Pro Am to her already impressive CV.

The 23-year-old had not played Huapai before but was impressed by what she saw.

"I was amazed at how good the course conditions were, particularly the greens and how true they rolled. It just really showed how much work had been put into the course leading up to the event, and it was amazing to be able to play the course in such great conditions."

"I felt that I played very consistent, struck the ball reasonably well which was great to see since I have been doing some work on my swing the last few weeks. I also felt that I rolled the ball quite well, and with the greens rolling so pure, I was able to hole some from a decent length which definitely helped."

Tied for second 2 shots back was former New Zealand Eisenhower player Kerry Mountcastle and experienced former Asian Tour winner Richard Lee, with Lee also complimentary of the course and the day.

"I have great memories at Huapai, as this is where I was first selected for the Auckland Junior Team many years ago. I have to say that the course was in the best condition I can remember seeing it in. Congratulations to the green staff. The greens were pure, and they actually got faster as the day went on. I look forward to playing again next year."

The amateur field enjoyed their day playing alongside the professionals in perfect weather conditions and with the course presented in stunning condition. Despite nearly 30mm of rain on

the Tuesday night, drainage and recent course improvements came to the fore, with immaculate tee boxes and fairways and beautifully rolling greens rewarding good golf.

The winning team of Hirepool Dominion Ramset (pic above) featured Ian Sloan, Brent Riggs and James Reed playing alongside young professional James Tauariki, their score of 90 points enough to win first prize of a \$400 cart bag each.

Another highlight on the day was the fund-raising auction, with Todd Lauchlan taking away the Trueform Spa Pool Executive Spa Pool package valued at \$19,000 for a cool \$14,500, with that and money from two other auction items going towards the club's new Cart Shed project.

"I thought the day was run so well. Course conditions were amazing, I saw lots of volunteers and staff out there on the course during the day which was great to see, and I had a great group to play with (the Trueform Spa Pools team). I had a lot of fun and would love to come back next year if I'm in the country."

## Helensville Museum News

"Happy to turn a visitor into a volunteer"

is a phrase that a colleague used the other day that struck a chord as that is exactly what happened to me. Four years ago I visited the Helensville Museum to take my first time proper look at the history of the district. I was born in Helensville 70 years ago with local family ties to Helensville, Parakai, Waitoki, Muriwai and Waimauku. Like many other young ones of the time, and today, I set my sights on a career far away and to make my own history. After 2 O.E's and 27 years I returned and found reconnecting with this historic town and the people easier than I had thought.



I was impressed with the collection of oral and family histories available. These are all personal stories of how people lived in the early years of this area's development. I felt connected here and decided to volunteer. I had no idea at the time that this was to become a deep dive and when tasks needed doing I got stuck in alongside the other volunteers. A very diverse and interesting group of people. The responsibility of preserving history is challenging yet very satisfying when the results of our team's work are presented. The garden team must also take credit for the colourful and thoughtful presentation of the gardens.

While the Helensville RSA will be closed for refurbishment from mid-December the museum has a new display of war memorabilia combining the RSA and their own records showcasing artifacts and



**JOIN US for GOLF | JOIN US for a BITE TO EAT | JOIN US for a DRINK | or JOIN US for ALL THREE!!**

Golfers, casual diners, families & friends are all welcome in our newly decorated friendly Huapai Bar & Café for great food at a great price. We serve delicious Breakfast, Lunch & Dinners - **No Membership Required for Diners!** Swing by **1261 Coatesville Riverhead Highway** [www.huapaigolf.co.nz](http://www.huapaigolf.co.nz) 09 412 8809 there's plenty of free parking



# In Brief

stories of our district's military personnel and the local war effort.

Our final event for the year will be the Twilight Market, at the Helensville Museum on Mill Road, on Friday 9th December 2022 4pm - 8pm

After three years of closures and lockdowns it is time to re-engage with the community and again share our district's history.

We are always on the lookout for volunteers. They are a scarce commodity and their value immeasurable. We value any skill and any time you have available. Please make contact by phone 09 420 7881 or email - [info@helensvillemuseum.org.nz](mailto:info@helensvillemuseum.org.nz)

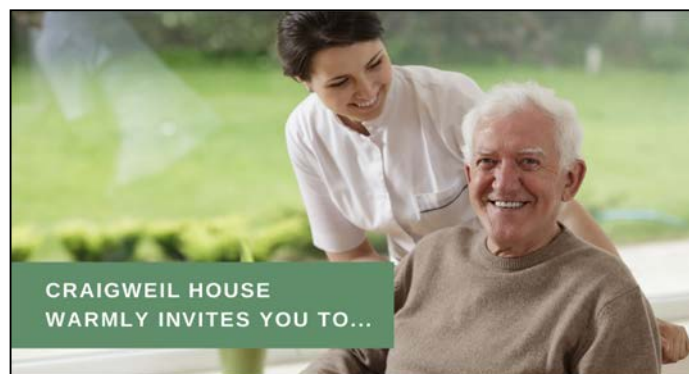
The Helensville Museum will be closed from 22nd December 2022 and will re-open 9th January 2023.

## Craigweil House

Picture: Roland standing next to the different cart used by local people long time ago.

The festive season is upon us once again and Craigweil House residents have been busy getting out and about and enjoying the warmer weather. With our regular bus trips back on, a favorite stop to the Helensville Museum inspired many residents last Month. Resident Roland, a long-term contributing rural community member was fascinated by the equipment and machinery seen, reminiscing of the long hours worked on the fields.

As we edge closer to Christmas residents are excited that this very week the decorations are going up at the same time that a joyous feeling is beginning to build, Craigweil House is glad and relieved to



CRAIGWEIL HOUSE  
WARMLY INVITES YOU TO...

### COME VISIT OUR UNIQUE BOUTIQUE RURAL CARE FACILITY

Situated on the Twin Coast Discovery Highway off State Highway 16 within reach of Muriwai Beach and the Kaipara Coast.

A caring environment nurtured by our dedicated team  
**Rest Home • Hospital • Secure Dementia • Day Stays**

★★★ No Premium Room Charges ★★★

You're welcome to come in for a cuppa and see us or ring us today to discuss a complimentary day stay

09 420 8277  
143 Parkhurst Rd, Parakai  
[info@craigweil.co.nz](mailto:info@craigweil.co.nz)



  
**Craigweil House**  
Home & Hospital  
FEEL AT HOME WITH FAMILY

be welcoming friends and family back once again to visit their loved ones and have a chance to catch up on another interesting year.

If you would like to enquire about Craigweil House for your loved one, please get in touch. We are a boutique rural facility with personalized compassionate support and care for rest home, hospital, and secure dementia levels of care - 09 420 8277. From everyone at Craigweil House, warm greetings and Merry Christmas to come!

## Helensville Twilight Christmas Market

Te Awaroa Helensville Museum grounds, Mill Road

Friday 9th December 4pm to 8pm

Join us for a festive evening out with market stalls, food, live music, Santa and much more...plus the Helensville Museum will be open.

For more information email [sarah@riversidecrafts.co.nz](mailto:sarah@riversidecrafts.co.nz).



## Nature's Explorers

Due to tamariki interests, at Nature's Explorer's Kindergarten, we have been learning about ocean animals and their habitats over the last few months. Last week we had a trip to Kelly Tarlton's Aquarium to take a close look at ocean creatures. Tamariki started exploring by walking through the underwater tunnel. They came face to face with sharks, stingrays, turtles and other incredible sea creatures. After the tunnel, tamariki had the opportunity to touch a live starfish. "Wow, it feels so cool!"-M. Our tamariki were amazed about the rough texture of starfish. The act of touching stimulates sensors within muscles and joints, sending messages back and forth from the skin to the brain. This stimulating brain cells that link up into pathways which become knowledge and skills.

At the Penguin Encounter, tamariki met adorable penguins. They saw how penguins move on the ice, and how baby penguins swim so



## Rent me today!

Ideal as an extra bedroom or office

Three convenient sizes:

- ✓ Standard from \$75 pw
- ✓ Large from \$95 pw
- ✓ Extra Large from \$120 pw



Visit our Display Cabin at  
275 Rodney Street, Wellsford  
(next to the South African shop)

**JUST CABINS**  
RENT A ROOM

Delivery  
from \$400

0800 58 78 22  
JUSTCABINS.CO.NZ



# In Brief

fast underwater. As tamariki get sense of awe from this experience, they are developing their concentration and ability to focus. This supporting our tamariki in their transitions to primary school.

For many tamariki, this was the first time to experience ocean creatures up close. Through this experience, they can link what they've learnt about at Kindy to the real world. It helps them gain a deeper understanding of the world around them and how we can make our world a better place.

If you are interested in contacting/visiting us at Nature's Explorers Kindergarten please contact Angela on phone 09 412 8800.

## Kindy Kids Huapai

The tamariki at Kindy Kids Huapai have really enjoyed the warmer weather of spring. It has enabled them to kick off their gumboots and enjoy the feel of real grass between their toes mixed with a sprinkle of mud. There has been a big emphasis on being outside in our amazingly big natural playground. This has provided the tamariki with lots of opportunities to practice their gross motor skills on the moon hoppers, kicking the balls, riding the bikes, and creating bike ramps and imaginary surf boards out of the loose parts.



The tamariki became very interested in spiders at Halloween and this interest has been extended and continues with them constantly exploring every corner of the playground looking for spiders and other creepy crawlies. What a great way to learn about different habitats, ka pai tamariki.

Feel free to pay us a visit at 10 Oraha Road, Huapai or phone 09 412 2624.

## Thinking about moving to retirement living?

Free from cost, and without commitment to act, we are hosting a fun and information packed event providing answers to the common questions about moving from the family home into a better and easier living environment.

The Best of Aged Care Seminar and chat is on Tuesday 28th February 2023, 10am to 12.30pm, West Harbour Church, 145 Moire Road, West Harbour, Auckland.

The best of aged care seminar will deliver a number of the very best accommodation and health care options available to you today from reputable and proven suppliers that really care about you, and your journey, to retirement living, making your next stage of life, comfortable, easy, simple and enjoyable.

For more information call 0800 900 700 or email [editorial@kumeucourier.co.nz](mailto:editorial@kumeucourier.co.nz).



**Teena Speedy**  
VILLAGE MANAGER

Hopper Living



Country Club

HUAPAI

Enjoy a luxury  
country retirement  
*today*

[COUNTRYCLUBHUAPAI.CO.NZ](http://COUNTRYCLUBHUAPAI.CO.NZ)

# Property

## Property market report

Was October the month in which house prices finally stopped falling after eleven months of steady declines?

The Real Estate Institute of New Zealand's House Price Index (HPI), which is probably the most timely and reliable measure of house price movements we have, because it is based on sales as they become unconditional and is adjusted for differences in the mix of properties sold each month, posted a 0.2% gain across the entire country in October.

That's a marginal increase to be sure and represents more of a flattening trend than an increase in prices. But it reverses the 0.7% decline of the previous month, and brought an end to the 10.9% drop that occurred over the previous 12 months.

It's too early to know whether October's figures marked some market stability or an upward swing in house prices.

It is probably significant that the HPI increased in the country's three main centres of Auckland +0.5%, Wellington Region +0.1% and Christchurch +0.3% in October, particular as Auckland and Wellington have previously posted some of the biggest price declines.

But even in Auckland and Wellington, the movements in the HPI were not uniform.

In Auckland the HPI increased in Rodney, but declined in Waitakere Areas.

November's figures should be telling, because it will be the market's last full month before activity starts to wind down for the Christmas/New Year break.

Indications so far are that sales volumes will remain at low levels compared to previous years and there won't be a lot of movement either way in prices.

The one word in every conversation is "uncertainty".

As the Reserve Bank fiddles with the Official Cash Rate, and Labour

fiddles with the CCCFA, the market finds itself drifting without commitment and without direction.

Let's look at the sales:

Helensville	\$880,000 to \$1,699,000
Huapai	\$915,000 to \$1,010,000
Kumeu	\$889,000 to \$3,850,000
Muriwai	\$2,000,000 to \$2,300,000
Parakai	\$680,000 to \$1,075,000
Riverhead	\$1,195,000 to \$1,780,000
Swanson	\$755,000 to \$1,580,000
Waimauku	\$1,150,000 to \$2,000,000
Waitakere	\$1,400,000
Whenuapai	\$760,000 to \$1,410,000

The buyer enquiry through email, text and phone calls is steadily increasing and I would encourage anyone that is considering selling a property to give me a call today on 0800 900 700 or email me [graham.mcintyre@mikepero.com](mailto:graham.mcintyre@mikepero.com). After 17 years in real estate you will engage with a very professional and experienced agent that will highlight the best options to get you on and off market in a timely manner - Mike Pero Real Estate Ltd Licensed REAA (2008).

## Keith Hay Homes

Keith Hay Homes has been delivering quality, transportable homes to happy customers since 1938. With variety of plan options, there is a home to suit your budget and lifestyle. From family homes, first homes, holiday homes, farm workers' accommodation, investment homes, they have you covered.



Keith Hay Homes are the experts in minor and secondary dwellings. They understand that taking all the steps involved in developing an investment property can be daunting. The experienced Keith Hay team can walk you through the process step by step, or handle everything so you can utilise your time to find the next project or concentrate on your own income source.

Homes are built by licensed building practitioners only, using top quality products from other leading New Zealand manufacturers. David Hay, Managing Director, offers his own Personal Guarantee, which gives more comfort than a Master Builders guarantee.

Keith Hay builds the homes in their yard and then transports to site meaning you have minimal site disruption, and you can still utilise

the  
rentshop

**Mike  
James**

Managing Director

☎ 021 413 660

✉ [mike.james@therentshop.co.nz](mailto:mike.james@therentshop.co.nz)

The Rent Shop Hobsonville Ltd  
PO Box 317118  
Hobsonville  
Auckland 0664

[www.therentshop.co.nz](http://www.therentshop.co.nz)



Scan me to view our listings & apply online.

Friendly  
Legal  
Experts

- Property Law
- Business Law
- Employment Law
- Debt Collection
- Family Law
- Family Trusts
- Estates
- Wills

**smith**  
AND PARTNERS

LAWYERS

293 Lincoln Road  
Henderson, Auckland  
PH: 09 836 0939  
[smithpartners.co.nz](http://smithpartners.co.nz)

# Property

your land up to the last minute. If you are in a hurry, they have pre-built homes ready for your section now and pre-consented homes ready to be built. Fixed price contracts and finance options are also available. They can take care of the whole building process for you. Speak to one of their team today 0800 KEITH HAY

## Rental property still a good buying option for investors

While we can continue to have confidence in what house prices will do in the medium to long term (they'll continue to go up, just as they have over the past 30 plus years) there's simply no way to know what will happen to them over the next few months.

This is because we're in an extraordinary period of history. After being under control for over 30 years, inflation has taken off like a rocket ship, circulating in space and it's an unknown quantity when it will land back to earth

At some point higher interest rates will crush inflation and we'll see it peak and then start to come down until it lands back to earth to one to three percent per year. Once this happens, mortgage interest rates will start to track down again, but we don't know when that will be and, to make things even more difficult, there's a lag between interest rates going up and their impact on the economy becoming apparent.

Despite the recent higher than expected inflation figure, it's entirely possible that the Reserve Bank has already done enough to bring inflation down, but we won't see the impact of recent OCR increases for some months. Because of this, the Reserve Bank is stuck between a rock and a hard place. The Reserve Bank doesn't want to give inflation any breathing room; nor will they want to overshoot by driving interest rates too high and end up driving the country into a deep recession

The reality is that house prices, on average, have fallen by about 7% across the country since August last year - and that the rate at which they're dropping has been getting smaller each month, despite the steady increase in interest rates.

It's a scary time for homeowners right now, but it won't last forever. One thing we can all be certain: at some stage in the next couple of years, we'll all be complaining about rising house prices again.

Investors are capitalizing and being drawn back to the Auckland



market due to the opportunities starting to appear. There have been several developers selling up, and having to adapt expectations around pricing. Investors are not wanting to invest in shares or cryptocurrency given the current volatility of the stock market and are looking for a safer option for their money. The rental market is a good option to embrace until "The Housing Crises" passes where they are still seeing reasonably good returns. Investors are also factoring in the 10-year bright line test, and are looking at rental properties as a longer-term investment.

What we tend to see over the Christmas period is the housing market starts to flatten out, creating a perfect environment for investors to purchase a property under market value and creating a positive yield. If you've looking for help with property management, an appraisal or just wanting to speak with other investors feel free to contact Mike James 021413660 [mike.james@therentshop.co.nz](mailto:mike.james@therentshop.co.nz).

## Managing higher rates when refixing your loan?

The first article I wrote for this magazine started off saying:

"Mortgage rates have been at historic lows for a while now, it's felt like a 'new normal', but rates are starting to climb again."

We are well past those lows now... and unfortunately, it doesn't look like we've reached the top of the cycle yet.

In this new environment there are some key areas you should consider:



**KEMP BARRISTERS & SOLICITORS**  
*Your local team of legal experts*

Property Law  
Litigation  
Family & Relationship Law  
Trust & Asset Protection  
Wills & Estates  
Commercial Law

[info@kempsolicitors.co.nz](mailto:info@kempsolicitors.co.nz)  
09 412 6000  
25 Orahua Road, Kumeu



**VODANOVICH**  
LAW

SALES & PURCHASE OF REAL ESTATE

RELATIONSHIP PROPERTY | BUSINESS STRUCTURES

POWERS OF ATTORNEY | WILLS & TRUSTS

COMPANY & EMPLOYMENT LAW

PLEASE CONTACT IVAN

[ivan@vlaw.co.nz](mailto:ivan@vlaw.co.nz) 09 412 8000  
4a Shamrock Drive Kumeu, Auckland

# Property

**Fixed Rate Term:** The difference between the 1-year rates, the 5-year rates (and everything in between) are starting to shrink. It can be tempting to go for the longer rates when this happens - but keep in mind it's a solid commitment - if rates drop in the future, you could be looking at expensive break costs if you want to move to a cheaper rate, as well as pricey early repayment costs if you want to repay your loan early.

**Lending products:** With higher rates, the use of products such as offset, or revolving credit can be even more valuable, helping you to pay less interest. Before refixing your loan it's worth checking whether you have the best products for you.

**Your bank/lender:** As the rates rise, the difference in offers between different lenders is also increasing. This could be the right time to review the market and make sure you're with the best lender for you.

**Affordability:** If you're worried about being able to make the minimum payments at the new rates; I highly recommend seeking advice before it becomes an issue. Generally, addressing this risk early will give you more options for resolving it.

If you'd like help reviewing your lending, I'm available free of charge; and if you want to meet in person the coffee is on me.

Scott Wombwell, Managing Director & Financial Advisor, Better Borrowing 020 4009 8944 | [www.betterborrowing.co.nz](http://www.betterborrowing.co.nz).

## A developer company offers to buy your property

A developer company offers to buy your property but shortly before the settlement date advises you that it cannot come up with the funds and wants a \$150,000 discount. What do you do?

There have been cases where a developer forms a company to purchase a property with insufficient money when it comes to settlement. Lawyers sometimes call these shell companies because while the paperwork for the company is all in place, the company does not own any assets. The developer's game is to then claim, when it comes to time to settlement, that it could not borrow the necessary settlement money and further complain that property prices have fallen. For this reason, we warn our vendor clients against selling to a company purchaser except when a significant deposit such as 10% or more is paid. This is because most people or companies will not walk away from a purchase if they paid up to 10% of the total value which they will lose upon default.

However, if a developer does walk away a court can make a developer personally liable as the director of the company. Put simply, a director of a company cannot be reckless about running a company in a way which causes serious loss to the company's creditors including you as vendor of the land. In this case the vendor

of the land would be a creditor of the company and the developer would be personally liable for the shell company obligations in the purchase agreement. In general terms, the law requires a company to have more assets than liabilities and to pay its debts as they fall due whenever they do a deal.

In most cases a developer who finds out that he or she may be personally liable will often find means to settle at the agreed purchase price. For this reason it is important to have your lawyer keep the right pressure on a party if there is a failed property transaction by a shell company. For more information on this or any other legal issues contact Kemp Barristers & Solicitors at [info@kempsolicitors.co.nz](mailto:info@kempsolicitors.co.nz) or 09 412 6000.

## Need to negotiate with Santa to get onto the Nice List?

Do you need some help negotiating with Santa? If you find yourself not on Santa's Nice List this year then you have a variety of options. You can decide to do nothing (which may include throwing your toys out the cot, having a moan to your mate/spouse, or just drink the beer the kids leave out for Santa on Christmas Eve), but if that doesn't sit well with you then you could write to Santa and ask him what his problem is. Maybe there is some way you could work it out, or something you could do to right the wrong - maybe Santa doesn't have a clear record of the facts and



you could clear up a few misunderstandings. If that letter gets lost in the post or Santa is too busy to respond, then perhaps you could file with the Disputes Tribunal. It's a handy resource as Santa will have to attend in person and isn't allowed to take his lawyer. Assuming your wish list this year is under the magic number of \$30,000 then the Disputes Tribunal will hear your complaint, however they won't make Santa send you presents if they agree you were right but it's a good start to resolving a dispute. Another idea is to ask Santa to meet you for a chat and see if you can work it out - or maybe your lawyer could talk to Santa's lawyer and negotiate a resolution.

If your beef isn't with Santa then ClearStone Legal can also help resolve matrimonial disputes, neighbourly disputes, employment disputes, shareholder disputes - or we can help put an agreement in place before the dispute arises.

If you need some help negotiating with Santa or someone else then contact ClearStone Legal. Telephone 09 973 5102 to make an appointment.



**Property • Disputes • Family • Wills**

**Taina Henderson** 027 537 9222

**Shelley Funnell** 027 537 9221

**Amie Wallwork** 021 421 336

[www.hendersonreeves.co.nz](http://www.hendersonreeves.co.nz)

### Gravel Drive Solutions.



Broken Driveways graded and rebuilt with triple layer construction system. Water tableting, Side drains, culverts, french drains in gabion rock and driveway dust suppression treatments. House hard stands, car parks and horse arenas. Call for an on-site chat and a quote. Nic, Gravel Drive Solutions Ltd. 021 538 539



**Weber**  
Baby Q 1000 LPG BBQ



BLACK  
317366



TITANIUM  
318130

**\$449<sup>ea</sup>**

**Weber**  
Q 2000 LPG BBQ



BLACK  
317364



TITANIUM  
318399

**\$649<sup>ea</sup>**

**Weber**  
Family Q 3100 LPG  
BBQ with Cart



BLACK  
317365

**\$1,119<sup>ea</sup>**

**Weber**  
Q Portable BBQ Cart  
H: 660mm, W: 470mm, L: 750mm



BLACK  
239466

**\$189<sup>ea</sup>**

**Weber**  
Q Half Hotplate Suits  
Q2000 series  
27.43 x 1.27 x 38.86cm



239476

**\$89<sup>95</sup><sup>ea</sup>**

**Weber**  
Q Portable Cart Cover  
185 x 67 x 255mm



BLACK  
289075

**\$84<sup>95</sup><sup>ea</sup>**

See in-store for full range of Weber BBQ's & accessories

**Big Range,  
Low Price,  
Local Advice.**

Mitre 10 MEGA Westgate & Henderson  
Northside Drive & Lincoln Road  
Monday to Sunday: 7am to 7pm



@MEGAWestgate  
@MEGAHenderson

**MITRE 10  
MEGA**

**WESTGATE &  
HENDERSON**

# Area Property Stats

Every month Mike Pero Real Estate Kumeu assembles a comprehensive spreadsheet of all the recent sales in the area that reviews the full range of Residential and Lifestyle transactions that have occurred. To receive the full summary simply email the word "full statistics" to kumeu@mikepero.com. This service is free from cost.

SUBURB	CV \$	LAND AREA	FLOOR AREA	SALE PRICE \$	SUBURB	CV \$	LAND AREA	FLOOR AREA	SALE PRICE \$
COATESVILLE	1,800,000	2HA	198M2	2,790,000		1,580,000	1555M2	165M2	1,750,000
HELENSVILLE	1,400,000	2.37HA	340M2	1,050,000	SWANSON	1,225,000	1075M2	190M2	1,250,000
	1,350,000	1.52HA	242M2	1,510,000		960,000	1012M2	140M2	1,050,000
	930,000	465M2	108M2	960,000		1,100,000	514M2	163M2	1,050,000
	690,000	465M2	102M2	570,000		1,140,000	361M2	181M2	1,190,000
	890,000	508M2	112M2	815,000	TAUPAKI	1,875,000	2.54HA	206M2	1,905,776
	970,000	520M2	149M2	900,000	WAIMAUKU	1,400,000	4HA	132M2	1,950,000
	1,350,000	1.2HA	200M2	1,430,000		1,700,000	1.7HA	310M2	2,000,000
HUAPAI	1,350,000	664M2	192MN2	1,337,500		1,350,000	1224M2	198M2	1,400,000
	1,025,000	1013M2	154M2	1,255,000	WAITAKERE	1,625,000	2.96HA	372M2	1,855,000
	1,250,000	414M2	199M2	1,306,000	WESTGATE	1,225,000	549M2	150M2	1,028,000
KUMEU	1,250,000	502M2	181M2	1,299,000	WHENUAPAI	1,310,000	1007M2	104M2	1,430,000
	910,000	224M2	91M2	880,000		810,000	121M2	88M2	800,000
	1,250,000	600M2	175M2	1,375,000		1,415,000	330M2	244M2	1,465,000
	1,575,000	601M2	227M2	1,658,000		1,255,000	1568M2	92M2	1,285,000
	1,975,000	1500M2	279M2	2,075,000		1,410,000	365M2	239M2	1,431,000
	1,200,000	414M2	165M2	1,230,000		1,440,000	1414M2	195M2	1,730,000
	1,450,000	615M2	215M2	1,435,000					
	1,250,000	400M2	188M2	1,200,000					
MURIWAI	1,575,000	1.92HA	170M2	1,760,000					
PARAKAI	865,000	1095M2	110M2	900,000					
	945,000	514M2	184M2	960,000					
RIVERHEAD	1,555,000	1626M2	159M2	1,590,000					

DISCLAIMER: These sales figures have been provided by a third party and although all care is taken to ensure the information is accurate some figures could have been mis-interpreted on compilation. Furthermore these figures are recent sales over the past 30 days from all agents in the area.

Mike Pero's **low** commission rate:

**2.95%** up to \$490,000

(Not 4% that others may charge!)

**1.95%** on the balance

Plus \$490 admin fee. All fees and commissions + GST

Mike Pero Real Estate Kumeu also provide statistical data FREE from cost to purchasers and sellers wanting more information to make an informed decision. Phone me today for a FREE summary of a property and surrounding sales, at no cost and no questions asked. Graham McIntyre 027 632 0421 \*Available for a limited time. Conditions apply.

**Mike Pero** | REAL ESTATE

This page is sponsored by Mike Pero Real Estate, Kumeu  
Phone 0800 900 700 Licensed REAA (2008)

Graham McIntyre  
Brand & Territory Owner  
027 632 0421





## STEP ON THE PROPERTY LADDER

2 1 1

By Negotiation

### 2 / 10 Wickstead Place, Massey By Negotiation

I seldom find a home that offers so much and is so affordable. This home offer exceptional value for money with options for lounges/ study, office and relaxing. A simple two bedroom home with a large open plan lounge-dining integrating into a very useful and expansive conservatory, offering stunning sunshine and options for office/ study or 2nd lounge. Off street parking and a single garage for treasures, which the lawn area and plantings are low maintenance and park-like. A short stroll to the inner harbour, convenience shopping, schools and parks. Make your move to home ownership call me today.

[www.mikepero.com/RX3477990](http://www.mikepero.com/RX3477990)



**Graham McIntyre**  
027 632 0421  
09 412 9602

[graham.mcintyre@mikepero.com](mailto:graham.mcintyre@mikepero.com)



## RURAL ASPECT CLOSE TO WAITAKERE PRIMARY SCHOOL

3 2 1

By Negotiation

### 5 Northfield Road, Waitakere By Negotiation

A 1950's three bedroom home in a quiet hamlet, overlooking farmland and yet close to Waitakere Primary School, services and park. Set on 850 square meters, this is a unique home that can host the full joys of family and friends in an environment that extends to alfresco living, outdoor pursuits and garaging tinkers, all in the confines of this fully fenced property. Lovingly presented to reflect its pedigree and offering a neutral canvas for you to fully express your individuality. Available immediately for you to claim and move on in. Close to transport links, convenience shopping, Waitakere Primary School, and a short drive to Swanson Rail Station, Bethells Beach and Westgate Shopping hub. Motivated Vendor welcomes your interest today - You won't be disappointed.

[www.mikepero.com/RX3526152](http://www.mikepero.com/RX3526152)



**Graham McIntyre**  
027 632 0421  
09 412 9602

[graham.mcintyre@mikepero.com](mailto:graham.mcintyre@mikepero.com)



## BUSINESS - TOWN CENTRE ZONE - HUAPAI

3 1 1

By Negotiation

### 8 Oraha Road, Huapai By Negotiation

Nestled to the Eastern boundary of the Huapai Business Zoned area is this generous 869sqm parcel of land offering a flat section which shoulders the carparking and the Police Station at Huapai. A stately three bedroom bungalow with open plan kitchen, dining and living room leading onto westerly decking. A large shed and carport offers storage options while the yard is full of mature fruit trees. Fully fenced, flat section with services in the street. A short distance to parks, schools and convenient transport links. Invest today for options tomorrow.

[www.mikepero.com/RX3226379](http://www.mikepero.com/RX3226379)



**Graham McIntyre**  
027 632 0421  
09 412 9602

[graham.mcintyre@mikepero.com](mailto:graham.mcintyre@mikepero.com)



## NORTH FACING ALFRESCO - HUAPAI BY THE PARK

4 1 2

By Negotiation

### 12B Dida Park Drive, Huapai By Negotiation

A near new Universal home, set within a quiet suburb and enjoying a stunning north facing aspect overlooking the park. Set over two levels this 153sq meter (approx.) townhouse delivers generous space and outstanding sunshine. Downstairs has a fully carpeted multi-use double garage, storage, guest w/c and wide open plan kitchen, dining and lounge leading out to open/close pergola patio and access to park. Upstairs connects four bedrooms off a central corridor bathroom and ensuite and walk in off the master. Master and guest room/ office also enjoy park views. Set in an established suburb within Huapai Triangle the home has close access to Huapai Primary School, Access Road Film Studios, convenience shopping, restaurants, bars and transport links.

[www.mikepero.com/RX3505936](http://www.mikepero.com/RX3505936)



**Graham McIntyre**  
027 632 0421  
09 412 9602

[graham.mcintyre@mikepero.com](mailto:graham.mcintyre@mikepero.com)





**HIGH END BUILD - LOADS OF EXTRAS - CORNER SITE** 4 2 2

**By Negotiation**

**17 Moemoea Avenue, Huapai**  
By Negotiation

Near new, and built to a high standard with excellent attention to detail, high 2.7m internal roof height throughout and a significant list of upgrades that will delight and inspire you to secure this sun filled home. This seldom listed corner site delivers fewer neighbours, more sunshine and open aspect, so you feel you have space and an ambience that is hard to match. A beautifully presented four room brick and weatherboard blend with robust coloured steel roofing, while the layout provides excellent separation between the master bedroom and the family rooms. Two bathrooms and a guest w/c while the entertainers kitchen integrates seamlessly with lounge, dining area and alfresco decking and yard. A short drive to Huapai Primary School, convenience shopping, bars, restaurants and public transport.

[www.mikepero.com/RX3399606](http://www.mikepero.com/RX3399606)



**Graham McIntyre**  
027 632 0421  
09 412 9602

[graham.mcintyre@mikepero.com](mailto:graham.mcintyre@mikepero.com)



**ELEVATED LIFESTYLE LAND, VIEWS ARE PLENTIFUL**

**By Negotiation**

**Lot 1 / 30 Mahana Road, Waimauku**  
By Negotiation

Good land is hard to find and this land is picture perfect, offering a significant building platform, with extensive views and excellent soil composition. Set on Mahana Road, the land has services at the gate and provides a canvas that is fenced and has pockets of planting for privacy. If you are ready to build, this land is ready to go, with clean title and great access. We invite all land buyers to view this outstanding land offer in the heart of Waimauku. A short drive to beach, convenience shops, school and transport links. Make this decision the start of something truly amazing.

[www.mikepero.com/RX3492154](http://www.mikepero.com/RX3492154)



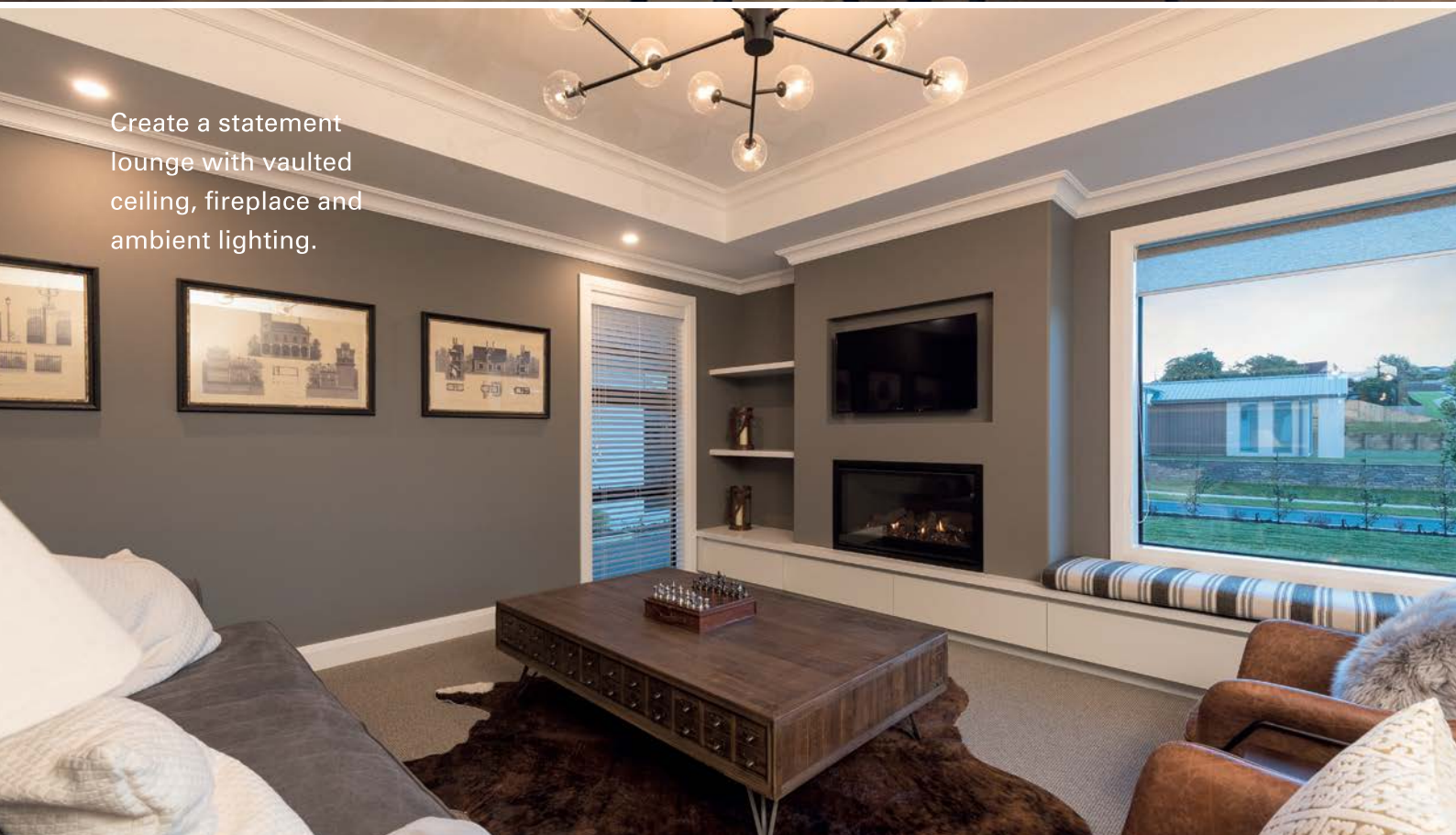
**Graham McIntyre**  
027 632 0421  
09 412 9602

[graham.mcintyre@mikepero.com](mailto:graham.mcintyre@mikepero.com)



Feature Lighting

Custom Island



Create a statement lounge with vaulted ceiling, fireplace and ambient lighting.



Gable  
Windows

Hidden  
Scullery

# BRING US YOUR WISH LIST

We can make your new  
home unique to you!

No matter what you're looking for, bring us your ideas and we'll work with you to create a home uniquely suited to you and your lifestyle.

If you're thinking of building, talk to your local GJ's team today about building you a home that we can all be proud of!

Bring us your wish list to start your new home journey today.

09 412 5371 / [gjgardner.co.nz](http://gjgardner.co.nz)

**G.J. Gardner.** HOMES

# Home & Garden

## Tile Wright

We are now carrying out free no-obligation quotes for your tiling needs; kitchens, splash backs, bathrooms and laundries. We specialise in all things tiling; we provide high quality services including Auckland Council approved water proofing, bathrooms, kitchens and splash backs.

With over 6 years' experience in the industry, we pride ourselves on high quality workmanship. We cover most of Auckland, have competitive prices and offer a workmanship warranty on all work. No job too small, we cover it all.

Call us today on 027 260 8225 for a free no-obligation quote.



## Laser Plumbing and Roofing Whenuapai

Your Plumbing, Roofing & Drainage experts in West Auckland.

Here we are knocking on the door of Christmas. This year has certainly flown by.

If you have any niggly plumbing issues that you just haven't got around to fixing, then give us a call and we can get it sorted before Christmas.

Dripping taps, a slow draining sink, blocked toilet, low water



Ever had mess left behind?



**No mess, no dodgy products & no run around. We guarantee it.**

Ph: 09 417 0110

Roofing | Plumbing | Drainage | Gas fitting  
Drain Un-blocking | 24 Hr Service



**"Totally Dependable"**

Laser Plumbing  
Whenuapai

[whenuapai@laserplumbing.co.nz](mailto:whenuapai@laserplumbing.co.nz)

[www.whenuapai.laserplumbing.co.nz](http://www.whenuapai.laserplumbing.co.nz)

pressure, clogged waste disposal, backflow issues. These are just some of the common plumbing problems you can experience in your home or business. We have a great team of maintenance plumbers who can easily remedy these frustrating issues, on time and hassle free.

Here at Laser we also specialise in all your long run/iron roofing needs...from roof repairs to complete roof replacements, gutter cleans, repairing and replacing gutters, spouting and downpipes. Whatever your needs, one of our experienced roofing team will offer you the right solution.

Our dedicated and knowledgeable team is focused on providing excellent service to our customers. No job is too big or too small for Laser Plumbing Whenuapai, so give us a call today on 09 417 0110 or email us on [whenuapai@laserplumbing.co.nz](mailto:whenuapai@laserplumbing.co.nz)

We are open five days a week from 7:30am - 4:30pm and conveniently located at Unit 4, 3 Northside Drive, Westgate. Visit our website [whenuapai.laserplumbing.co.nz](http://whenuapai.laserplumbing.co.nz) for more information.

## Growing avocados

It is no secret avocados not only taste great but are packed with amazing nutritional and health benefits too. More and more customers are buying avocado trees from Awa Nursery to add to their orchards. Growing your own avocados is very rewarding. Avocados need free draining soil, full sun and shelter from the wind. Young avocados are frost tender. Once you have selected your planting location, dig a hole that is slightly wider than the root ball and very slightly deeper. Incorporate a good quality free draining potting/garden mix



which will help with drainage and improve soil condition. Make sure your avocado is planted in a position that is protected from strong winds and it is recommended that young trees are staked. Ideally apply mulch or bark on the surface of the soil directly around the trees to increase the soil organic matter to improve soil structure, reduce evaporation and fluctuations in root temperature. Keep the mulch away from the stems to avoid collar rot. It is important to water your trees during dry periods, however let them have a chance to dry out between waterings, ie without natural rainfall, water every 3-4 days. Avocados do not like to be sodden. Foliar feed is advised with a combination of Nitrosol every 4-6 weeks. Weeding is important to prevent competition with the avocado tree roots. Hand weed an area 1 metre diameter around the trees. It is recommended to remove all flowers for the first 18 months as these will compete for limited tree reserves, it is not uncommon for trees to shed their leaves in late spring especially during flowering. It

**WE'LL SEE YOU RIGHT  
IN-STORE AND ON SITE**



WHENUAPAI | KUMEU | SWANSON

**WESTERN**  
**ITM**  
[westernitm.co.nz](http://westernitm.co.nz)

# Home & Garden

is best to prune more established trees (if needed) in later winter/early spring aiming to maximise the amount of light the tree gets and manage the size and shape. If you need help choosing the right avocado for your orchard or backyard, come and visit Awa today and talk to one of our friendly plant specialists.

Phone Awa Nursery: 09 411 8712, email [info@awanursery.co.nz](mailto:info@awanursery.co.nz) or visit [www.awanursery.co.nz](http://www.awanursery.co.nz).

## Flower arranging – Christmas theme

Saturday 17th December  
09:30 – 11:30am.

Have you ever wanted to create your own beautiful Christmas table setting etc. for that special lunch or dinner but aren't sure where to start or how to go about it? Then this 2 hour workshop will be ideal to get you on your way (as well as impress family and friends).

Louise Kirkwood from Old School Yard Blooms will present this event, which has traditionally been extremely popular.

Louise will bring her experience from growing, gathering and curating fresh, local, seasonal flowers on the property that housed the old Upper Waiwera School.

Her approach to growing and arranging flowers is to work with passion and in a manner which is sensitive to our ecological environment.

In this very interactive workshop, you will get the opportunity to:

Learn about tools and materials needed, with a focus on re-useable supplies, select flowers and foliage from the Kaipara nature trail and gardens, practise some different ways to create smaller and larger pieces for a tablescape, and learn how to help your creations last



longer.

If you have a small dish or other container you would like to utilise to contain your creation please feel free to bring that along.

After the workshop you can also spend some more time in the Gardens which has a beautiful sculpture exhibition along a 1.2km pathway as well as our recently created nature trail which is a further 2.4 km for you to explore. This is all set in the idyllic Kaipara countryside and placed so as to blend sympathetically with the surrounding environment.\*

There is also a kid's play area as well as our cute little coffee shop on site plus of course the Plant Centre for you to browse through.

Our knowledgeable and friendly staff will also be on hand to help with any garden related questions.

\* Sculpture Gardens pathway and Nature Trail not suitable for wheelchairs or walking frames.

1481 Kaipara Coast Highway (SH16), 4km north of Kaukapakapa. Tickets: \$20 per person. To Book: [info@kaiparacoast.co.nz](mailto:info@kaiparacoast.co.nz) or 09 420 5655.

## Western ITM

For farm fencing supplies we are your one stop shop. Post and rail, wire and batten, our store has everything you need - including quality hardware and fixings to get your farm fence built.

For temporary fencing, we stock the Gallagher portable electric fencing systems and Strainrite fencing tools and accessories. We also carry RXP stock water troughs (round/rectangular for domestic or commercial use) and the complete range of low-density polyethylene pipe and fittings. Stock gates are also available in metal or wooden 5 bar and cap in an assortment of lengths. And for those of you with barns/stables we also have Purepine dust free shavings - (sold per bale) readily available.

Do you have a project or plans you would like priced? Then contact our experienced Sales Team today! Email: [kumeu@westernitm.co.nz](mailto:kumeu@westernitm.co.nz) or phone 09 412 8148.

Christmas Trading - Western ITM Kumeu and Whenuapai's last trading day will be Saturday 24th December 2022, closing at midday

**WYATT**  
LANDSCAPE  
SUPPLIES  
0800 638 254 [www.wyatts.net.nz](http://www.wyatts.net.nz)

Making your place a green space

OPEN 7 DAYS

# Growing winter veg?

## Let us help

Grandad's garden mix • Compost • Topsoil • General fertiliser  
• Sheep pellets • Blood & Bone and everything in between

948 State Highway 16, Waimauku • Call 09 411 9604 • [www.wyatts.net.nz](http://www.wyatts.net.nz)

# Home & Garden

(our Swanson store will be closed on this day).

All our stores will re-open on Wednesday 4th January 2023.

Wishing everyone a safe and happy holiday season! From the team at Western ITM. Locals, supporting locals. 3 Auckland Stores - Open Mon-Sat. Whenuapai | Kumeu | Swanson. [www.westernitm.co.nz](http://www.westernitm.co.nz).

## Maddren Homes

When Kiri Bevan answered her phone late one afternoon she had no idea the call would eventually lead to her family building a new home.

Kiri's parents Marty and Glenys had taken her nephews on a short hike and Glenys had slipped and hurt her leg. With a storm coming in and no signal on their phones, Marty sent Kiri's nephews off to call for help. In the end a helicopter was sent to airlift Glenys out.

Glenys had shattered several bones in her ankle. As Marty was still working, she stayed with Kiri's family while she recuperated. For Kiri and her husband Andy, this was a glimpse into the future and they considered renovating their home to make room for her parents on a more permanent basis. Then a friend offered them a section to buy in Millwater with the idea they could build a new home to suit them all.

They didn't want a traditional granny flat. They wanted a home that provided connection and privacy for everyone, that made good use of space and that could be resold as an integrated home. They shopped around a few different building companies, but it was Maddren who came up with a clever plan for making what they wanted work.

A few years and lots of decisions later, The Bevans now have a



spacious, multigenerational home that works for the entire family with a flexible layout making it future-proof. The living pavilion, with kitchen, dining and living spaces is a great, central place for everyone to share and congregate with views of the pool. Upstairs is a private sanctuary for the nuclear family and the grandparents live downstairs, at the rear of the home.

The grandparents' quarters are accessed via the hall or a door that cleverly connects the two kitchens. They are quite independent, with a bedroom, bathroom, lounge, kitchen and plenty of storage. Their ensuite is accessible from the lounge, which is handy for guests. They also have a separate entrance, plenty of gardens and their own deck that connects with the main outdoor area.

All three generations have been thrilled with not only the flexibility and functional flow, but also the quality of the build and the great balance between luxury and practical living.

Maddren are passionate about providing their clients with a true design and build service, and creating this unique home to fit the extended Bevan family like a glove is what Maddren does best. Please see below for contact details.

## LED lighting – time to make the switch

When it comes to lighting your home efficiently, LED downlights have set a new benchmark. Not only are they stylish and safe, they can also save you a lot of money on power bills.

Choose a style to suit you. Lighting requirements for the rooms in our houses vary, depending on what the room is used for. The colour of the light is also important and it can make a huge difference to dining, reading and other activities. LEDs can also be controlled or programmed to suit your lifestyle. LED lighting solutions can come with wireless, daylight, occupancy, and dimming sensors, depending on personal preferences.

Put safety first. Halogen downlights run at temperatures over 300°C and the excess heat generated means that you often need gaps in your insulation to ensure there's no risk of fire. The below photo is an example we recently came across in a roof space we were working in. Without appropriate gaps around the bulb, the insulation had begun to burn, and over time, could have resulted in a house fire. Generally, less than 20% of an LED's output is heat, which means that the risk of a house fire is much lower when running LED lights.



**A HOME  
YOU CAN'T  
WAIT TO GET  
BACK TO!**

[maddrenhomes.co.nz](http://maddrenhomes.co.nz)  
0800 666 000  
248 Main Road

Proudly based  
in Kumeu  
since 1935



**NOR-WEST AND KUMEU  
GLASS SERVICES**

*"Specialists in Windscreens & Glazing"*

**Some of our services include:** Residential and Commercial Glass Repairs - Automotive Glass Repairs - Cat/Dog Door Installs - Splashbacks - Mirrors - Picture Frames - Double Glazing - Caravan and Boat Windows - Car and Truck Mirror Repairs - Stonechips

**CALL - 09 412 9914 | [nwkg@xtra.co.nz](mailto:nwkg@xtra.co.nz)  
9a Weza Lane, Kumeu, Auckland 0810**

# Home & Garden

Save your hard-earned money. LED downlights can reduce your lighting energy output by up to 86%. While a standard incandescent bulb may only cost a couple of dollars, it only has a lifespan of about 1000 hours. In contrast, most LEDs should last at least 15,000 hours - More than 13 years if used every day for three hours. Watts measure power consumption - While incandescent bulbs can produce the same amount of light as an LED, they also use 5-6 times the wattage...and Higher Wattage = More Money on Power. Despite the higher upfront cost of LEDs, you can expect to save money in the long run through reductions in your power bill.

If you've looking to discuss your lighting requirements, or think it's time to make the Switch to LED, give the team at Blackout Electric a call on or email us [info@blackoutelectric.co.nz](mailto:info@blackoutelectric.co.nz).

## Summer

Summer is here, is your pool ready to use?

Come and see us in store for all your swimming pool needs, including free water testing.

Pop into our store with a sample of your spa or pool water and we will sort the rest for you! Regular valets available.

Christmas hours - We will be open with skeleton staff right through the Christmas holidays. 24/7 plumber and pump techs available. Reduced shop hours: We will be open from 9am to 3pm Dec 28-30, Jan 4-6. Normal shop hours resume 9th Jan. Closed public holidays.

Extra water storage - Don't get caught out this summer. There is



still time to get extra water storage installed. We have a variety of colours to choose from and sizes ranging from 300L to 31,000L.

Use free rainwater - garden, car, boat, home washing, W/C and hose taps. Give us a call today for a free quote for water tank supply and installs.

KPL 09 412 9108 - 156 Main Road Kumeu. Big Blue Building. [www.kumeuplumbing.co.nz](http://www.kumeuplumbing.co.nz) or send us an email [info@kpl.co.nz](mailto:info@kpl.co.nz). Wishing you all a safe and Merry Christmas from the KPL team.

## Kumeu Community Garden

Would your community organisation like a veg patch for the summer? Your community garden is looking for groups to adopt a garden bed!

Kumeu Community Garden would like to offer local community groups a garden bed to manage, free of charge. You will receive some expert gardening advice as well as an established bed with a range of herbs, vegetables and flowers to enjoy! You may be a daycare, retirement village, church or cultural group. Or just a group of friends who enjoy getting together for a chat and an activity.

You will also have the knowledge of knowing you are supporting KCG to thrive and grow.

The garden is lush and healthy at the moment, the working bee in early November saw lots of planting including Corn, tomatoes, marigolds, chickpea, kumara coriander and pumpkin. There is still plenty of plants available for planting including zucchinis and





Install a

# Roof Water Tank

300 - 31,000 Litre...



- ▶ Reduce water & waste water charges
- ▶ Use **Free** Rainwater
- ▶ Garden, Car, Boat, Home **Washing**
- ▶ W/C and **Hose Taps**



[www.kpl.co.nz](http://www.kpl.co.nz)

# KPL

Kumeu	09 412 9108
West Auck.	09 833 6300
Helensville	09 420 9108
Nth. Shore	09 444 1449

156G Main Road Kumeu / BIG BLUE BUILDING

# Home & Garden

tomatoes.

It would be wonderful to see some local groups enjoy this fabulous facility, if you are interested please message KCG via Facebook or email [kumeucommunitygarden@gmail.com](mailto:kumeucommunitygarden@gmail.com) for more information.

The next working weekend is 3rd/4th December, look out for more information on Facebook.

## New Zealand Biosecurity Services

Image Source: Ministry for Primary Industries.



It's Christmas time and we all love our Christmas trees - or do we? Wilding pines are considered a nuisance across the north island, with central government spending millions of dollars per year on wilding pine control. So what is a wilding pine? It is a pine tree that has naturally germinated from an introduced pine tree.

Auckland Council is keen to see wilding pines removed and if anyone has a piece of native bush that they are to protect and subdivide, they will be asked to kill any standing pines within the area. This can be quite daunting as removing mature pines is costly and can damage the native trees that are growing underneath. The best way to do this is to drill holes into the trunks and insert chemical directly into the trunk of the tree in a technique called 'drill and fill'. After a while the tree will die and it will be left standing to slowly rot down. When the tree has rotted enough, the trunk will generally collapse and cause a lot less damage than dropping a living tree.

New Zealand Biosecurity Services are able to provide control of individual pest trees such as wilding pines, poplars and willows and

we can tailor our quotes to your budget depending on how much you can afford each year. Make sure you chat to one of our friendly team today on 09 447 1998 or [administration@biosecurity.net.nz](mailto:administration@biosecurity.net.nz).

## Creating the ultimate outdoor space

When it comes to designing your dream home the outdoor space can often get overlooked, that's why many of our Signature Homes plans include outdoor living that can be adapted and maximised to suit your lifestyle. By turning the space into an outdoor room, your house has a larger footprint and you have the potential to increase the value of your home, not to mention the fun there is to be had by the whole family.



The concept of outdoor cooking has come a long way from a few snags on the barbie as fully outdoor pizza ovens and fully appointed kitchens become very popular. But you need not break the bank to create the dream outdoor space for your family.

Here are some smart tips from the team at Signature Homes to help you get started:

**Create zones** - Be deliberate in your layout, how will you use the space? Will be you be eating meals as a family, chilling out with friends, entertaining children. Define your space then add privacy with screens, trellis, or even planter boxes. A pergola creates a great focal point which can be softened using climbing plants.

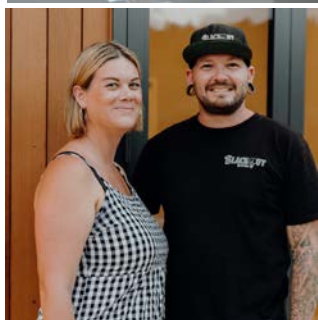
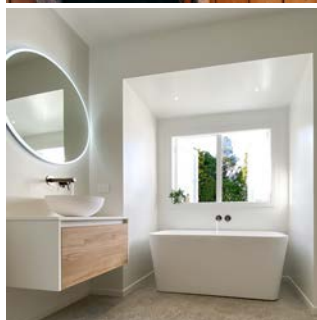
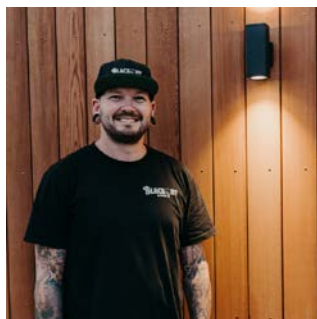
**Make it functional** - How will you reach the space from your house? It needs to be easily accessible with a trayful of food and drinks. What is the orientation of the sun? Is there already shelter in place? Outdoor furniture is one of the biggest investments, make sure it fits the area well without being too cluttered.

**Cover it up** - NZ weather can be fickle so try and plan for all weather conditions. A shade sail is a great temporary option, otherwise, clear roofing is cost-effective, easy to install, and, most importantly, will give you cover without blocking out the sun. You could consider extending your roofline across the deck if you are building, this will create a seamless flow and bifold doors will make the space an extension of your indoor living.

**Keep it cosy** - Electric radiant and gas bottle heaters are a cost-effective way to keep warm year-round. If you have space an outdoor

**BLACKOUT**  
ELECTRIC

P. 022 500 5856  
E. [info@blackoutelectric.co.nz](mailto:info@blackoutelectric.co.nz)  
[www.blackoutelectric.co.nz](http://www.blackoutelectric.co.nz)



**NORTHWEST PAINTERS**

RESIDENTIAL  
COMMERCIAL  
EXTERIOR  
INTERIOR  
SPRAY PAINTING  
PLASTERING

LAIRD MCKECHNIE

PH 022 1200 464

[LAIRD@NORTHWESTPAINTERS.CO.NZ](mailto:LAIRD@NORTHWESTPAINTERS.CO.NZ)



# Home & Garden

fire, brazier, or fire pit will keep you toasty when the sun dips plus it will add a great focal point. Clear slides might be a good option to shelter you from any prevailing winds. Don't forget to have cosy blankets on hand.

Shine the light - Add ambiance with outdoor lighting, there are many options to choose from depending on the atmosphere you want to create. Festoon lights are right on trend and will add a different dimension to your space once the sun goes down.

Plants, plants, plants - The most cost-effective way to add life to your outdoor space is with greenery. Choose plants that suit your climate in various sizes to create atmosphere, shelter, and privacy.

If you've been thinking about building but are unsure where to start a New Home Consultation could be ideal for you. Contact Signature Homes West & North-West Auckland on 0800 020 600 to start your new home journey today.

## Waimauku Garden Club

Our last monthly visit for the Garden Club was on a rainy day in November so thankfully some of it involved being indoors. We all enjoyed a comprehensive tour of St Mary's and Holy Trinity Cathedrals which have been part of central Auckland life for many generations. Well worth a visit, St Mary's is an old church built in the Gothic style from heart Kauri in the 1880s. With a beautiful interior and stain glass windows it survived a move across the road in 1982 and is now part of Holy Trinity.

Staying in the city, we visited Parnell Rose Gardens which are currently putting on a magnificent display. With over 5000 roses there is something for everyone and with a huge range of colours it is an enjoyable wander, and includes some lovely old pohutukawa trees.

After lunch we visited Highwic House, another heritage building which has been carefully preserved and again showed a slice of early Auckland life. The gardens there are also worth a visit, although the rain curtailed a longer stay.

For December we are gathering together to enjoy a Christmas lunch, finishing off a challenging year.

The Garden Club welcomes new members and we encourage you to join us on our outings. We have a Facebook page which you can follow or join and if you have any queries please feel free to contact any of the committee members as listed below.

Ann 021 035 7406, Diana 027 478 8928, Gail 021 344 070, Maree 027 496 3006, Moira 027 498 9154 Sandi 027 318 4541.

## \$100 = Exposure for a month

Budgets are tight and advertising is often expensive, but it's nice to know that someone is making it easy and cost effective. For \$100 plus GST you can be exposed to over 20,000 locals for a whole month. That is only \$3.30 a day. For more information email our editor at [editorial@kumeucourier.co.nz](mailto:editorial@kumeucourier.co.nz).

## Maximise the value of your land



BUILDING MULTIPLE DWELLINGS ON YOUR LAND WILL BECOME LESS RESTRICTIVE WITH THE NEW HOUSING LEGISLATION COMING INTO EFFECT SOON.

Talk to Signature Homes West & North-West Auckland today about maximising the value of your land.



Designed to improve housing supply in New Zealand's five largest cities, the new legislation will allow landowners to build up to three dwellings on a single section, up to three storeys high – without the need for resource consent from the council. **Talk to Signature Homes West & North-West Auckland today about maximising the value of your land. 0800 020 600 | 09 412 9010 | [signature.co.nz](http://signature.co.nz)**

Showroom/Office: 80 Main Road,  
Kumeu, Auckland.  
Open: Mon-Fri 9am-5pm



# Central's Tips

## December 2022



### The fruit and vegetable garden

- **Assisting eggplant flowers to pollinate** – use a small paintbrush to transfer pollen between flowers. Eggplant flowers are pale mauve and droop downwards, so they're often overlooked by the bees
- **A regular squirt of water** over the bean plants is said to increase bean production. Picking regularly also encourages a bumper crop
- **It's all in the staking** – plants such as beans, tomatoes and cucumbers benefit from good climbing supports through the summer
- **Find out if your potatoes are ready** by gently excavating from the edge of the mound. Early cropping potatoes are generally ready from now onwards
- **Young citrus tree leaves curling up?** An infestation of aphids on the backs of leaves can be dealt with by manually wiping them off, or by spraying with a fish-based oil spray such as Aquaticus 'Glow'
- **Leek plants are available in seedling punnets or bundles.** Separate them carefully, then plant each one in a 10cm deep hole (use a pencil to create the hole). Don't fill with soil, regularly watering will gradually fill it in

### The ornamental garden

- **Weeding is a great way** to tidy the garden up for summer, giving space for plants to grow and for mulch to be spread
- **Avoid clipping plants** like hedges and topiaries from now on as freshly exposed foliage will burn in the summer sun
- **Flowering agapanthus** should not be left to go to seed. These plants colonise easily in Auckland at the expense of other more desirable options
- **Summer prune** the wisteria, rambling roses and jasmine to maintain control as they grow extensively in the heat
- Plant **carpet thymes, prostrate muehlenbeckias** and **coprosmas** as hardy groundcovers to keep the weeds at bay
- **Heading away?** Move pots and baskets into shadier areas to reduce their water consumption
- **The scent of summer** – climbing star jasmine, bushes of philadelphus and michelia – or add a favourite rose – these all offer wafts of perfume around the summer garden

## Project for December

### Paving the way to an al fresco Christmas

The Feinwerk range of pavers are thinner and lighter to work with than most other concrete pavers. They also have a very high strength rating, making them our most popular paver for several years now. Lay a courtyard for Christmas and enjoy the outdoor experience.

To see the Feinwerk paver range visit [centrallandscapes.co.nz](http://centrallandscapes.co.nz)





**CENTRAL**  
LANDSCAPE SUPPLIES



# Outdoor Christmas at your place?

Central Landscapes has all the mixes and mulches to get the garden planted and looking fabulous by 25 December. Visit us, or check out our product range at [www.centrallandscapes.co.nz](http://www.centrallandscapes.co.nz)

**Central Landscape Supplies Swanson**  
09 833 4093 • [swanson@centrallandscapes.co.nz](mailto:swanson@centrallandscapes.co.nz)  
Open 7 Days • 598 Swanson Rd, Swanson  
[www.centrallandscapes.co.nz](http://www.centrallandscapes.co.nz)



# Food & Beverage

## Soljans Estate Winery

We're open in our bistro 6 days a week. With longer and warmer days in full swing our bistro is now open from Wednesday - Monday for all to enjoy.

Come and try our new summer menu while you unwind in the vines with a cold beverage (or two).

Wine tastings are also available in our cellar door 7 days a week. Whether you're a novice or a pro, there's something for everyone to enjoy.

For more information or to book, head to our website [www.soljans.co.nz](http://www.soljans.co.nz) or call 09 412 5858.



## Sweet Bells Cakes

Sweet Bells Cakes Limited is a registered home-based company located in Kumeu, Auckland. We do all occasions cakes which include weddings, milestones/celebrations, Polynesian themed and children's cakes. We specialise in creating high-quality delicious custom-made modern cakes which are uniquely designed and handcrafted to their finest details.

Our cakes are not just stunning centrepieces but are delicious to taste, that's something everyone can experience as part of the celebration. Our motivation is to go above and beyond not only to



**UHY Haines Norton**  
Chartered Accountants

**YOUR LOCAL ACCOUNTING, TAX & BUSINESS IMPROVEMENT EXPERTS**



Come and see our friendly team for tailored, practical advice you can trust

**UHY Haines Norton (Auckland) Limited**  
329A Main Road, Kumeu **t** (09) 412 9853  
**e** [kumeu@uhyhn.co.nz](mailto:kumeu@uhyhn.co.nz) **w** [www.uhyhn.co.nz](http://www.uhyhn.co.nz)

meet customers' desires and satisfactions but to make their occasion unforgettable which brings great fulfillment to our company.

For booking, please send a direct message to us through: email [sbellscakes@gmail.com](mailto:sbellscakes@gmail.com) or [www.facebook.com/sweetbells.co.nz](http://www.facebook.com/sweetbells.co.nz).

## Jesters Pies Westgate

New Seasonal Pizza Pie and Chips combo

What's better than pizza? A pizza pie! Our Chicago Deep Dish Pizza features pepperoni, smoked ham, prime beef, capsicum, basil, oregano, marinara and our famous Jesters cheese sauce. We've packed in the flavor to create this unique Chef Special.

Get in quick because this special pizza pie/chips/drink combo is here for a limited time

Available at Jesters Pies, Westgate Shopping Centre (next to Countdown) Ph. 09 832 6060.



## Chocolate Spearmint Toffees Recipe

Just in time for the festive season, this recipe can be made using any of your favourite herbal teas, but is delicious and refreshing made with Spearmint tea. These make a great Christmas gift and you can use milk, dark or white chocolate to cover the toffees then add any toppings such as salt, toasted coconut or roasted chopped nuts.

The toffee recipe is from the Edmonds Cookbook 1986 edition.

Ingredients: 2 tablespoons Spearmint tea, 1 cup water, 2 cups sugar, 1 tablespoon vinegar, 1 tablespoon butter and approximately 250g of chocolate for coating, plus any toppings.

Method: Make the tea by adding a cup of boiled water to the Spearmint tea and allow it to steep for 10 minutes. Strain and measure the tea, adding more water if needed to make up one cup.



Come and check out our new  
Delicatessen, Coffee, Juice & Ice Cream Bar

**BORIĆ Food Market**

1404 Coatesville - Riverhead Highway, Auckland  
[www.boricfoodmarket.co.nz](http://www.boricfoodmarket.co.nz)





# Food & Beverage

Add the tea to a saucepan along with the sugar, vinegar and butter and slowly bring to a boil without stirring. Boil until hard ball stage is reached then pour into a well-buttered dish and allow to set. Break into pieces, then coat in melted chocolate and add your favourite topping.

Store in an airtight container in a cool location for up to one week.

To purchase Spearmint tea and other Certified Organic herbal teas, visit our online store: [www.NewZealandHerbalBrew.co.nz](http://www.NewZealandHerbalBrew.co.nz).

## Momma Bear Bakes

Momma Bear Bakes is an A grade Auckland council registered home baker located in Kumeu. Roshi aka Momma Bear is a self-taught cake decorator who found her true passion later and now obsessed with creating sweet masterpieces.

We love being able to design and bring to life something that tastes and looks magnificent and delicious, leaving you to want more.

If you want to make your wedding, birthday or any other milestone beautiful and memorable with a stunning cake contact momma bear through [www.mommabearbakes.co.nz](http://www.mommabearbakes.co.nz) or her Facebook or Instagram accounts.



## Westbrook Winery

Summer time at Westbrook Winery is simply stunning.

The grapevines are covered in intensely-green leaves and the small-but-perfectly-formed bunches of grapes hint at the delicious wine to come.

The vines and their precious cargo are safely tucked up under the netting so now we just need the sunshine to work it's magic and ripen the fruit. Lots of sunshine equals a spectacular vintage!

There are many great places to sit and enjoy the view of the vineyard, from beside the pond under a big



broolly, or on a leafy terrace, open deck or covered patio.

The Cellar Door has been busier than ever, and the team is enjoying hosting groups of all sizes for family gatherings, celebrations and catch-ups with friends.

Planning a visit? Bookings are highly recommended for weekends and public holidays.

Book online [www.westbrook.co.nz/book-now](http://www.westbrook.co.nz/book-now) or call the friendly Cellar Door team on 09 411 9924.

## The Gallery Café and Japanese Restaurant

(Dine-in and takeaways). Food Delivery and takeaways also available via UBER EATS and ORDER MEAL.

Here at The Gallery Café we offer a delicious all day café menu and Japanese meals for lunch and dinner to give you the ultimate culture experience within your meal. Not only do we deliver delicious meals but our talented chief has some of his work on display right here for all of you locals to come view and even purchase. So be sure to pop in for a coffee, breakfast, lunch or dinner and check out. Pop online to our Facebook page ([www.facebook.com/thegalleryjapaneseandcafe](http://www.facebook.com/thegalleryjapaneseandcafe)) too find out a little bit more about us. 329a Main Road, Huapai 09 412 8983.



## Hallertau

It's the return of a Hallertau original.

At 8.5% Stuntman IIPA is best not attempted by the faint hearted.

Ten hop additions make this an utterly rambunctious thrill seeker of an ale. Brace your senses for the ride.

Pouring now at Hallertau and available in the 1L Keeper bottle.



**RYAN JACKSON**

M: 027 498 6202. E: [ryan@treehouseprint.co.nz](mailto:ryan@treehouseprint.co.nz)

P: 09 810 8609.

PO Box 133, Kumeu 0841 Auckland



**FreshChoice Waimauku**

A-2 Waimauku Retail Centre

5-19 Factory Road

Waimauku, Auckland

Phone: (09) 411 7890/411 9495

Fax: (09) 411 8050

Mobile: 021 048 3355

Email: [waimauku.fc@xtra.co.nz](mailto:waimauku.fc@xtra.co.nz)

# Health & Beauty

## Collagen

Collagen is a structural protein and is specifically found where there is connective tissue such as the blood vessels, skin, gastrointestinal tract, cartilage, ligaments and tendons. It looks like a rope which is why it is needed for structure and strength (think saggy skin when the collagen starts to degrade as we age).

Protein is usually made up of amino acids (think pearls on a pearl necklace) and each protein has different types of amino acids and in different orders. Collagen is made up of 3 different types of amino acids glycine, proline and hydroxyproline (hydroxyproline is unique to collagen).

To make collagen in the body you need vitamin C, as it turns proline into hydroxyproline. So if you don't eat fruit and veggies or much protein you're not going to get much collagen.

There are 28 different types of collagen with Type 1, 2 and 3 being the most abundant in the body and the ones found in most supplements,

Animal foods that contain connective tissue such as chicken skin, pork skin or crackling, beef and fish, organ meats can be good sources of collagen. Vitamin C rich foods are also important for collagen production so lots of fruit and veggies are needed (as explained above) especially kiwi fruit, capsicums, raw broccoli, citrus and berries.

Making it in the body is actually rather hard. When we eat protein it doesn't automatically get converted into collagen. Some studies have shown that when we take supplemental forms of collagen they get absorbed and can go straight to where they are needed or



can in the case of skin actually encourage the skin itself to produce collagen, elastin (to make it elastic) and also hyaluronic acid (which plumps and moisturizes the skin). The vast majority of studies that show benefit use supplementation not food.

The research for collagen's benefits on skin and joint health is pretty solid (decreasing wrinkles, improving elasticity and decreasing stiffness and pain) and the research on heart and gut is in the beginning stages but so far looks promising. There is also some current research being undertaken on collagen and diabetes type 2 and hypertension so watch this space. Beneficial doses seem to be between 5 and 20g/day.

If you are interested in finding out more about collagen, its benefits and what to look for then I have a free guide. Go to [sarah-brenchley.com/links](http://sarah-brenchley.com/links) to grab it.

## Pure Allies

Here we are in December, it rolls around so quickly.

If you need natural sunscreen, would like to pamper yourself with luxurious products, or if you still need Christmas gifts, secret Santa gifts or stocking fillers please get in touch.

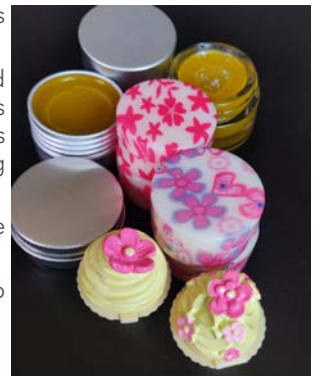
Massage balms and lip balms are some of our most popular products.

Please note Christmas orders need to be in by December 15.

Happy Christmas, stay safe

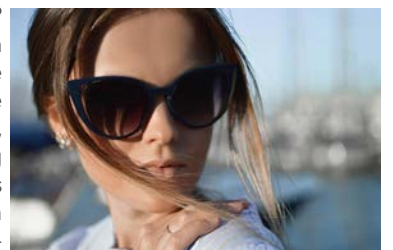
[pureallies@gmail.com](mailto:pureallies@gmail.com)

FB Pure allies nz



## Sunglasses with style

Shopping for Christmas? Consider sunglasses from our brand-new range. There is something for everyone and just landed are Raybans, stunning new Vera Wang models, plus Maui Jim sunnies and many more. Ask for an exchange voucher for risk-free giving - the recipient can browse our selection and exchange the model.



## KUMEU GYM 24 SEVEN

YOUR FITNESS EVOLUTION

- Fully Equipped Gym
- Designated Cardio Area
- Group Fitness Classes
- Smart Training
- Personal Training
- Indoor Netball
- Supplement Shop



Providing fitness in Kumeu for 30 years

Ph. 412 8932 | [www.kumeugym.co.nz](http://www.kumeugym.co.nz)

Clarkson  
Air Conditioning

- HEAT PUMPS & AIR CONDITIONING
- DUCTED & HOME VENTILATION SYSTEMS
- SERVICING & REPAIR
- FREE ASSESSMENT & QUOTE

Office 09 912 0553,

[admin@clarksonaircon.co.nz](mailto:admin@clarksonaircon.co.nz),

[www.clarksonaircon.co.nz](http://www.clarksonaircon.co.nz)

# Health & Beauty

Best New Year's Resolution: to get your eyes examined at For Eyes. Book now online. Choose your own appointment time, and we'll txt you a reminder the day before. <https://for-eyes-optometrists-nz.au1.cliniko.com/bookings#service> or visit our For Eyes Facebook page or website and click on the booking link. Or phone us on 09 412 8172.

Our Christmas holidays:

We are closed for a pre-Christmas short break from Friday 16 to Monday 19 December inclusive.

We are closed for Christmas/New Year from 12 noon Friday 23 December to Sunday 8 January inclusive.

We look forward to seeing you from 9am on Monday 9 January. Merry Christmas and a Happy New Year from Matt and Molly Whittington and Anna O'Hare at For Eyes, 92c Main Rd, Kumeu Shopping Village.

## Long Covid

It pains me that I still have to write about covid, but unfortunately it's still a "thing". The definition of Long Covid is variable, but you would generally be considered to have Long Covid if you still have symptoms of aches and pains, fatigue, or others several months after your infection. One of the most believed theories is that the virus sits deep in tissues with a slightly altered structure to avoid the immune system. From there it can continue to cause problems just like chronic fatigue after glandular fever.

Future Treatment Options: Over time I am sure we will see complicated antiviral treatments get developed to totally rid the body of the Covid virus. If the HIV virus treatments are anything to go by, it will involve long term treatment with multiple medicines. This is not much comfort if you need to get your life back now.

Current Options: There are many nutrients that can help support key organs and systems of the body like the brain and energy producing mitochondria. N-Acetyl cysteine is the precursor of the most effective anti-oxidant in the brain (glutathione). Turmeric is very anti-inflammatory for all areas of the body such as the brain.

In terms of energy production, nutrients like Co-Q10, B-vitamins (especially NAD), choline, magnesium, lipoic acid, vitamin C, carnitine, and magnesium are helpful to nurture your energy production in the mitochondria. Getting your energy back is one of the key desires of people with post viral fatigue.

Sulforaphane upregulates key factors in the body that protect you from oxidative stress. I have had good success with therapeutic mushroom complexes in patients with long covid. Plus there are a number of herbs that are adaptogenic (to help you cope with stress

and change) and others that have good anti-viral properties.

Lifestyle factors like getting good sleep, and reducing stress can be very helpful. Moving your body is also recommended, but keep it within your current capabilities, don't try to rush back to your pre-infection super-person status.

The strategies that I have mentioned may seem like a lot of things to "throw" at long covid. However, if it means getting your life back, it may just be worth the effort. Pop into Massey Unichem Pharmacy to chat to us if you have any questions about Long Covid. Martin Harris, Massey Unichem Pharmacy 396 Don Buck Road, Massey. 09 833 7235.

## Treat yourself to a gorgeous smile this Christmas

It is the season to be jolly and indulge in a few festive treats and pamper ourselves and loved ones! But it won't be just our waistlines taking a hit this Christmas.

Throughout the party season we will be increasing our intake of sugar, so it's vital we take extra special care of our teeth and gums.

A few tips from Kumeu Dental:

- Drink plenty of water and chew sugarless gum often
- Wait at least 20 minutes after your last snack or glass of wine before brushing your teeth, as any kind of acid will temporarily weaken your enamel.
- Rinse straight after coffee or red wine to maintain the good results from your last whitening treatment

And talking about whitening, here is the good news:

Our highly in demand whitening December special is here, so if you would like to have pearly whites this Christmas, ring us on 09 412

### Take Your Eyes to For Eyes!

- Advanced scanning equipment for early detection of cataract, glaucoma and macular degeneration
- Specialty assessment of child and adult reading difficulties
- Specific-tint lenses for Irlen Syndrome
- Lenses to correct red-green colour-blindness



Phone: 09 412 8172  
email: [foreyes@foreyes.nz](mailto:foreyes@foreyes.nz)  
website: [www.foreyes.net.nz](http://www.foreyes.net.nz)

Matthew and Molly Whittington, optometrists in the Kumeu Village since 1993  
Open 9-5 weekdays, Kumeu Village, 90 SH16 Kumeu

DT DENTURE CLINIC  
DENTURE SERVICES AND REPAIRS

### Attention Denture Wearers Expert Treatment, Individual Needs

#### We offer:

- Full Dentures
- Partial Dentures
- Same Day Relines, Repairs and Tooth Additions
- Mouthguards
- WINZ Quotes

*Make a booking to discuss your  
FREE treatment plan.*



Made in NZ with imported materials

67 Brigham Creek Road,  
Whenuapai  
[www.dtdentureclinic.co.nz](http://www.dtdentureclinic.co.nz)  
P: (09) 416 5072

# Health & Beauty

9507 and ask our friendly receptionists how we can help brighten your smile, while keeping your wallet smiling too :)

Check out these amazing specials on [www.kumeudental.co.nz](http://www.kumeudental.co.nz). Smiles are contagious; spread it to your loved ones with a Kumeu Dental gift voucher.

## Building confidence and self-esteem

Anxiety is a feeling of worry, nervousness, or unease about something with an uncertain outcome. This places anxiety in the realm of negative thoughts and feelings. Everyone feels anxious at some point, whenever we do something unfamiliar or outside our comfort zone. Feeling anxious is perfectly normal, as is an awareness that it will pass.



However, some people find anxiety hard to control, and these feelings can remain as a constant presence, impacting our daily life. Anxiety activates the fight or flight mechanism, resulting from a triggering thought or circumstance, or an unresolved trauma. Our fight or flight response is designed to keep us safe.

Sometimes it's hard to imagine what life could be like without the limiting beliefs that hold us back. It makes us feel increasingly exhausted and frustrated.

Book a free no obligation discovery call with Terri [www.calendly.com/terrinewmancoaching](http://www.calendly.com/terrinewmancoaching).

## Are you a fast walker or a slow walker? And why it matters

Walking is one of the best exercises you can do, but did you know that your walking speed can be used as an effective predictor of longevity?

A co-author from a study on this topic said that most people have a "stable preferred walking speed" and that "your body self-selects your walking speed that best accommodates all of the systems that are needed to walk", and that is why walking speed can be a good indicator of overall body function.

If you can walk at a good speed, great, keep it up. If on the other hand, you are slowing down, it may be time to investigate why that is.

If it's a joint, muscle or balance issue, chiropractic care maybe be able to help.

## How long do dental implants last?

Most people are aware that dental implants are an excellent solution for replacing missing teeth, whether it is a single tooth, several teeth, full upper arch, lower arch or both. As implants can be a considerable investment for many people, one of the questions we are most often asked is: how long do dental implants last?



The longevity of dental implants depends largely on oral hygiene and lifestyle factors. The good news is that when a dental implant is maintained with excellent oral hygiene through great brushing and flossing routines, it can last for a lifetime. That's why it is considered to be a permanent tooth replacement option, because with the right care you may never need to replace it. In contrast, a crown typically needs to be replaced every 10 or so years as it wears down.

With over 37 years' experience in dental implant surgery and prosthetics, Dr Alex McIntosh heads the dental implant team at Fraser Dental. Over those years he has remained at the forefront of dental implant technology, continually improving the methodology, implant techniques and materials to provide his patients with superior results. Dr McIntosh is recognised by the NZ Dental Council as being one of the country's most experienced Dental Surgeons in implant dentistry in advanced complex cases. He is passionate about giving his patients confidence in their smiles and solutions that work with their lifestyles.

If you would like more information about the benefits of dental implants contact the friendly Fraser Dental team at 1 Wiseley Road, Hobsonville on 09 416 5050 or email [info@fraserdental.co.nz](mailto:info@fraserdental.co.nz) to schedule a consultation today.

## Helping New Zealanders do more

We offer personal and business lending for almost anything you might need, whether it's that new vehicle for the family, a ute for the business or even a jetski for the warmer months!

Offer of finance is subject to terms, conditions, lending criteria, responsible lending inquiries and checks. See [mtf.co.nz/terms](http://mtf.co.nz/terms) for details.

Talk to Gerrie and the team today.

☎ 09 399 2478  
 📍 82A Main Road  
 ✉ [kumeu@mtf.co.nz](mailto:kumeu@mtf.co.nz)  
[mtf.co.nz/kumeu](http://mtf.co.nz/kumeu)

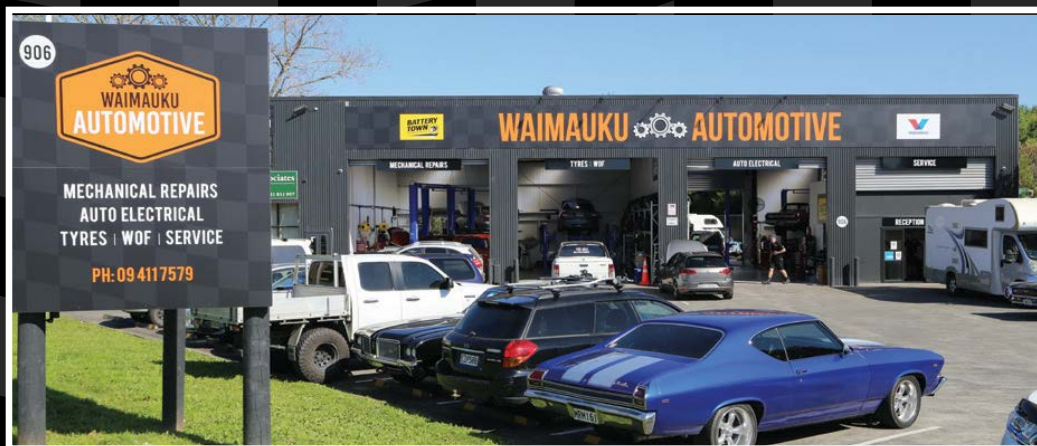
**mtf** finance  
 KUMEŪ







- Warrant of Fitness - \$45
- Mechanical repairs, servicing and Auto Electrical for all makes & models
- All the top tyre brands at great prices, tyre fitting, wheel balancing and alignments
- Full range of car batteries available
- Air conditioning services for all vehicles



906 State Highway 16, Waimauku Roundabout

Ph: 09 411 7579 | Email: [info@waimaukuautomotive.co.nz](mailto:info@waimaukuautomotive.co.nz)



# Area Columnists

## December is a time to celebrate

With December fast approaching, it's fair to say it's been another busy year for our Government. As part of the Labour team I'm proud of what has been achieved for the Rodney region and I'm committed to building on this so that we can achieve even more.

I was rapt to meet with the Principal Cindy Sullivan and BoT Chair Rochelle Gillespie to celebrate the success of our Kaipara College students last month. The inspirational speeches by the Head Students, Riley Gudopp and Billie Stroobant, were good reason to celebrate the positive contribution Kaipara College makes.

I was especially pleased to present the Prime Minister's Vocational Excellence Award to Cameron Barrie whose ambition to become a boat builder come even closer thanks to the help of Kumeu based Blade Runner Boats.

There has been much to celebrate as more people are in work with wages growing, the country's exports going up and as tourists return our economy is larger now that it was before Covid 19.

In Kaipara ki Mahurangi we can celebrate the building of more warm, dry homes in our communities. We can celebrate the building of new schools and the upgrading of existing classrooms. We can celebrate the provision of free healthy school lunches and free period products so that our children can take advantage of the opportunities that are opening up across the region.

I'm pleased to celebrate with you the lowest unemployment rate across New Zealand in recent history and the investment in health, in education, in employment, in the environment and in public transport so that we can all look forward to a brighter future.

Like you I'm proud to celebrate that our local businesses have been backed to build and drive our economy with over 215,000 people benefiting from targeted trades training, from free apprenticeships and the flexi-wage initiative.

This December we can celebrate that everyone will receive fair pay for their hard work through Fair Pay Agreements that will improve not only wages but working conditions as well. I know, too, that we can celebrate that over the past year more than 100,000 people

have moved from the benefit into paid employment.

While there has been a lot to celebrate this year, we also know things have been tough for many families. That's why we've rolled out a whole package of cost of living support, including a fuel tax cut, half price public transport, boosts to benefits and Superannuation, and more to help ease the pressure. So now is not the time for tax cuts for those who already have the most.

So, as we celebrate the successes and achievements of our friends, our families and our communities this December I have great pleasure in wishing you a Merry Christmas and a Happy New Year.

## Dress ups are for boys too

At Country Bears we value play equity and we certainly encourage imagination.

Role play is a very important part of a child's education and development. Here at Country Bears we feel it is so important that we provide the children with the opportunity to develop their imagination, as it helps grow confidence, communication, physical development, creativity and problem solving. Children are able to engage by becoming a different character and playing out different roles that they see and observe.



As a parent, you may have observed your child pretending to make dinner, have an argument with a friend, work in an office or look after a baby, and this is no different if your child is a boy or a girl. Young boys also love to role play, love to wear dresses, be a fairy and play female roles. It would be amazing to see parents feeling confident in this stage of development without the fear of having to justify their child or feel ashamed. Instead, to have the confidence to embrace his curiosity and support him wholeheartedly through this phase. As a community we need to keep an open mind, let kids be kids and support families without judgement.

At Country Bears we encourage everyone to participate in all areas



**Wishing  
everyone a very  
Merry Christmas!**

**Marja Lubeck**

Labour List MP based in Kaipara ki Mahurangi

For enquiries, please contact my office:

0800 LUBECK or 0800 582 325.

[marja.lubeck@parliament.govt.nz](mailto:marja.lubeck@parliament.govt.nz)



Authorised by Marja Lubeck,  
Parliament Buildings, Wellington

# Area Columnists

of our curriculum, we certainly wouldn't stop a girl from using our carpentry area or wearing a firefighter dress up! Children in their early years can know the difference between genders, however, it is not until a child is in their primary school years that they truly start to understand the social stereotypes of what being a boy/man or girl/woman really means.

The other major benefit of letting children explore their world through dress ups in an early childhood setting, this exploration occurs in a safe environment. Other children may not yet have developed gender awareness and the teachers embrace it, role modelling positive attitudes towards imaginative play. Let's just accept them for who they are, what they want to do and how they want to show up in their world. As adults, it's important that we view them, as they view themselves, as an innocent creative being.

If you would like to visit our wonderful Centre, designed to provide the children space and time to develop at their own individual time, give us a call on 09 412 8055 to arrange a suitable time. In the meantime, check out our Website page: [www.countrybears.co.nz](http://www.countrybears.co.nz)

Country Bears Early Childhood Centre, 79 Oraha Road, Kumeu. 09 412 8055.

## Quiz night December 1

About \$500 worth of prizes are offered at a Thursday December 1 quiz night run by Predator Free Waitakere/Swanson in the Waitakere RSA at 7pm.

The prizes include gourmet spices, wine, native plants, gift vouchers, gourmet jams, local honey, predator traps.

Funds go towards the cost of stoat traps. The evening includes networking for trappers, gardeners and nature lovers, plus food. The cost is \$20 per person. Visit [www.predatorfreewaitakere.org](http://www.predatorfreewaitakere.org) to book.

## Sayers Says It

By Rodney Councillor Greg Sayers.

Auckland mayor Wayne Brown is urging me to get busy and to deliver upon my election promises.

Getting Council focused on delivering core services together with stopping unnecessary wastage and over spending is still firmly in my sights.

The Mayor has appointed me to a leadership role, creating a "razor squad" with authority to scrutinise the spending of every Council department, with the goal of cutting costs, improving productivity and improving better customer services. Savings would be directed back into Council's front line staff, improving roading and minimising

rate increases.

In the past senior Council staff have identified cutting front line services such as libraries, community centres, or selling parks, before looking at Council's own internal processes. This is no longer the acceptable response.

In addition, Council needs to publically define what is "core business"? At the time of amalgamation Auckland Council never went through the exercise of defining what this was. Accordingly, the efficiency and cost savings Aucklanders were promised never materialised. Trustfully, a new day has dawned under the leadership of Mayor Brown.

Significant push back for change from some of the Councillors, Local Board members and staff is to be anticipated. However, the majority of Aucklanders have voted for change by electing Brown as Mayor. We can now expect that change to occur - expectantly for the better.

Integral to achieving any success will be reversing the centralisation of decision-making away from city based bureaucrats and back to locally based personnel. This is particularly necessary for rural areas like Rodney in the north and Franklin in the south. Urban-focused planning, consenting, compliance and contracting rules simply do not work in the rural environment. Exactly where and how this will be achieved by the organisation is to be worked through. One size does not fit all and Mayor Brown seems to understand this.

The public want Council staff to be more accessible, more identifiable and more accountable when helping them to resolve issues. Auckland Council's Chief Executive, Mr Jim Stabback, will need to be accountable for implementing the organisational culture changes required to fully support the Mayor's vision.

Success will also require the Local Board's to be given wider powers, more resources and budget to deliver more at the local level.

All this does depend, however, on the Mayor having the political support of the majority of councillors to vote in these directives. It seems he does have the 11 votes out of 21 he requires around the Town Hall table.



**PROUD TO SERVE OUR  
LOCAL COMMUNITY WITH  
SEPTIC TANK EMPTIES  
AND MAINTENANCE.**

**0800 493 768**  
[www.hydrovac.co.nz](http://www.hydrovac.co.nz)



**Pete Sinton**  
Managing Director

**09 412 2016 | 021 637 772**  
49 Beach Street, RD 2, Sandspit, Auckland 0982

[petesinton@townplanner.co.nz](mailto:petesinton@townplanner.co.nz)

# Area Columnists

The Royal Commission's recommendation to have an 'Independent Services and Performance Auditor' acting as a watchdog over both the bureaucrats and politicians between election is still valid. Mayor Brown is currently neutral on this.

Overall, there is a strong sense of hope that Rodney will be treated far more fairly this term.

In closing, I look forward to serving the wider Kumeu/Huapai districts interests in 2023. May I also take this opportunity to wish you and your family a very Merry Christmas and a safe and enjoyable summer.

## Kumeu Library

Along with warmer weather, December is always a busy time with the end of the school year, Christmas and the long summer school holidays - and there's always lots going on at Kumeu Library! On Friday 2 December Kumeu Library staff will be at Christmas at the Showgrounds - look out for the Pirate Library bus and the pirates! We'll have a craft table for children to create their own Christmas decoration, so come and say hi and stay for a few moments of quiet creative fun.

Kumeu Library will be all decorated for Christmas, and our theme this year is Harry Potter - come in and see our themed Harry Potter Christmas tree and have fun doing some Harry Potter activities in the library! As you plan and organise towards Christmas, don't forget that Kumeu Library has a huge range of resources to help you decorate, find new recipes, make handcrafted gifts, and generally get into the Christmas spirit! Go to our online catalogue to see the full range of items available, or come in to the library and check out our shelves.

December also brings the summer school holidays, and during January we'll be providing loads of free holiday fun for school-aged children - keep an eye on our Facebook page ([www.facebook.com/kumeulibrary](http://www.facebook.com/kumeulibrary)) for details of all Kumeu Library's activities, events and news. We'll have regular morning sessions with fun activities

for school-aged children, as well as activities to do any time in the Library, including our fabulous Scavenger Hunt.

Auckland Libraries is once again running its popular summer reading programme - we all know how important it is to maintain the habit of reading over the summer school holidays, and our free summer reading programme gives you heaps of ideas and resources. There are two Te Ara Poutama/Level Up challenges: one for tamariki aged 5 to 12 and the other for teens aged 13 to 18, and the programme runs for 42 days from Monday 12 December to Sunday 22 January. By completing quests and with six activity badges and daily reading badges to be earned, your children will be having fun and improving their reading at the same time! Each of the six quests has a choice of six activities, and only one needs to be completed to earn the badge. Find out more on our website ([www.aucklandlibraries.govt.nz](http://www.aucklandlibraries.govt.nz)) or come in and ask us about it at Kumeu Library. Make reading over the school holidays fun!

After all the rush of Christmas, January is time to relax and enjoy the summer weather! If you're going away over the summer, make sure you have plenty of reading material with you. Kumeu Library has a wide range of books, eBooks, magazines, eMagazines, DVDs and audiobooks available to borrow, so come in and check some out! If you're short of time, we have Ready-to-Read packs made-up and ready for you to quickly check out - each pack has five books from a specific genre, carefully chosen by the Kumeu Library staff.

Don't forget that Kumeu Library is open normal hours (9am to 5pm Monday to Saturday) over the Christmas period, apart from the Public Holidays (Monday & Tuesday 26 & 27 December and Monday & Tuesday 2 and 3 January 2023) when we will be closed.

## Chris Penk, MP

In the past couple of years we've talked quite a bit about supporting local businesses. During the Covid lockdowns, this became a near necessity as well as feeling like the right thing to do.

Switching the focus to the decisions that we all make as consumers, at an individual level, the choices made by government are also important.

From the perspective of policy makers, supporting local businesses should look like enabling the family firms and other small outfits to get a fair go. When it comes to rules and regulations, often the big end of town is better placed to weather a storm of red tape, simply due to scale. A larger firm (for example a multinational operating an office in New Zealand) will usually have a broader workforce - so can hire a dedicated "health and safety" officer, for example - in a way that Mum-and-Dad businesses simply doesn't. And then of course there's a question of having a big balance sheet backed by many shareholders, compared with the small start-up reliant on borrowing against the family home.

Recently I had the privilege of visiting Wharehine Construction



**SPECIALISING IN ALL TYPES OF  
PLUMBING & DRAINAGE**

---

 PLUMBING	 DRAINAGE	 GAS
 PUMPS	 WATER TANKS	 FILTRATION

---

**LOCAL, RELIABLE & REASONABLE**

New housing,  
alterations & repairs



Domestic & Commercial



**Master Plumbers**  
Representing Excellence

P 09 412 6322  
E [sales@waterfx.co.nz](mailto:sales@waterfx.co.nz)

# Chris Penk

MP for Kaipara ki Mahurangi

**Here to help**

134 Main Road, Huapai • [christopherpenk@parliament.govt.nz](mailto:christopherpenk@parliament.govt.nz) • 09 412 2496





Authorised by Chris Penk, 134 Main Road, Huapai.

# Area Columnists

Contractors, a multi-service civil construction, quarrying & transport business. They're based in Wellsford but operate across both the Auckland and Northland regions. What stood out to me was not only their reputation of employing locals but additionally that they are built on a foundation of family values and a family culture. They're a seriously impressive and credible organisation, as can be seen in the infrastructure projects they're completing in our area, such as Matakana Link Road. Importantly, though, they are part of the community and are literally invested in the success of this area.

I give the example of Wharehines to illustrate the bigger point that we all need to play our part, including Wellington, to support local businesses both big and small.

I hope this column finds everyone well and surviving the early onset of silly season activities. Christmas seems to have come early this year (although maybe I've allowed it to sneak up on me!) and I hope to see you out and about at the various local Santa parades, markets and the like ... supporting local businesses and a certain jolly fellow from the North Pole too.

## Cat lovers we need your help

The NZ Cat Foundation has a sanctuary based in Huapai which houses over 150 cats. We offer safe sanctuary for older, disadvantaged and unhomeable rescue cats where they can live out their lives in safety and comfort. We need regular volunteers to help with routine chores so our cats can enjoy happy, healthy, safe lives. We are looking for volunteers who are mature, have a sense of responsibility, are good team players and dedicated animal lovers. Helping at the sanctuary is a popular way to fulfil community service hours for Duke of Edinburgh, St John's, Scouts, Guides, church, university, animal sciences studies, etc. We are happy to sign off on your hours and provide any needed verification of your service. We rely heavily on volunteers on a daily basis and desperately need more.



Financial and food donations are also urgently needed to cover vet

and other costs associated with our sanctuary. The NZ Cat Foundation also supports community Trap-Neuter-Return programmes and helps feed and care for many cats living in the community. Please visit our website for more information on volunteering and how to donate at [www.thenzcatfoundation.org.nz](http://www.thenzcatfoundation.org.nz). You can also email - volunteers: [volunteer@thenzcatfoundation.org.nz](mailto:volunteer@thenzcatfoundation.org.nz) donations: [info@thenzcatfoundation.org.nz](mailto:info@thenzcatfoundation.org.nz).

## Coffee and U-Pick Flowers @ Kumeu Flower Farm

Hey everyone, we haven't posted for a while, but that doesn't mean to say we haven't been busy! Over winter we put in a huge effort to get the roses ready for Spring & Summer and rearrange our seasonal crops. We had some absolutely stunning roses at the beginning of the season for the first flush. This also means our World Famous U-pick is in full swing so make sure you get in early to get your place as spaces are starting to fill up.



This year we have some great options for you so hop online to [www.flowerfarm.co.nz/page/u-pick-flowers](http://www.flowerfarm.co.nz/page/u-pick-flowers) If you want a group booking please email us [shop@flowerfarm.co.nz](mailto:shop@flowerfarm.co.nz)

Coming Soon: - A barista made delicious wake up coffee with your flowers! Book your U-Pick option online & add a coffee. Available for weekend U-Picks.

Here Now: - Our incredible Xmas Lilies are now here! Standing approx. 2 m tall these are just stunning from \$3.50 per stem. We have grown them inside the greenhouse so the flush is early and we only have a limited number available. Book online for these or come on down to our barn shop @ 108 Station Road, Huapai, Kumeu.

Pick n Go now available: - If you need a bouquet in a hurry we now have a selection available outside our shop for you. Drive in anytime between 8.30am-6pm 7 days a week!

## Quality Steel Sheds, Designed for You.

### Lifestyle & Residential Sheds, Farm Sheds, Commercial & Industrial Buildings

- Tailored to your specific needs
- Built up to 30m wide (span) and 7m stud height
- Made with .40-gauge steel roof and cladding for lasting durability
- Designed and engineered in NZ for your environment
- Building consent process handled by our team
- Locally owned and operated in Kumeu



KiwiSpan Kumeu  
329 Main Road,  
Huapai, Auckland 0810



0800 870 078  
09 412 8455



[www.kiwispans.co.nz](http://www.kiwispans.co.nz)  
[kumeu@kiwispans.co.nz](mailto:kumeu@kiwispans.co.nz)



# Area Columnists

**Bespoke Farm Fresh:** - We are specialists in making Bespoke bouquets. We pick to order fresh from our garden. We grow everything here so it's 100% kiwi.

**Shop hours:** - Mon/Wed/Friday: 9.30am-2.30pm, Tues/Thurs: 9.30am-2.30pm & 4.30-6pm Sat/Sun: 9.30am-12.30pm. When you buy from us you are helping to support your local business, the amazing staff that help to make all this possible and your community. Please remember us when you need that "pick me up" or that something special! Phone 09 412 7606.

## Kanika Park Cat Retreat

Holidaying and your cats - Going on holiday can be a stressful time for some cat owners. How well will they really be treated? What happens if they get ill?



These are very valid questions.

Our recommendation is that you contact a facility well before your holiday. Note most catteries are booked months if not years in advance for Christmas and New Year. It would be wise to contact them at least a year before your holiday is due. You can always cancel a booking or change dates within reason, but you can't get in if they are full

A couple of things to think about before you choose a place

- Meet the owners & staff - Make sure you feel completely comfortable and at ease with the whole setup. Discuss any special needs your cat may have; diet, medication, attention, grooming etc
- Size & design - What is provided in each suite? Are they spacious, sunny, quiet, temperature controlled? Is it individual or communal living? Indoors or indoor/outdoor?
- Security - Does the owner/manager live on site? You should not assume that they do. If they do not ask when they start and leave

for the day

- Know where your cat will stay - Make sure you can take your cat to their suite. If you are asked to leave and collect your cat at reception - this should be of concern to you

Remember that it is your cat, their health and wellbeing is paramount Kanika Park Cat Retreat is not your usual cattery, we are a family-owned boutique luxury cat retreat, phone 027 550 1406 or email [info@kanikapark.nz](mailto:info@kanikapark.nz).

## Travel is back

It has been a long 3 years, but finally travel is back with a hiss & a roar - it seems like everyone is wanting to get away, which is wonderful, the last 6 months have been extremely busy for me, back doing what I love!

The Travel Brokers celebrated 20 years in business in November, and this was my own 10th anniversary as a Broker with them.

Our conference was in Adelaide & the Barossa and it was wonderful to meet some of the new Brokers that have signed up during Covid, networking, learning from one another and seeing the passion and enthusiasm for selling travel back again. We are very fortunate to have such a tight knit group of brokers.

We packed a lot in, starting with a 5 hour Italian cooking class, making our own lunch in the Yalumba's professional kitchen, then off to Maggie Beers farm for a look around the grounds. Day 2 - was conferencing, then onto Seppeltsfield Winery for a tour of the vineyard on Segways for a bit of fun. Then the most incredible wine tasting with hor d'oeuvres match in the grand dining hall. The renowned chef Owen Andrews gave us an overview of his cooking style where he sources only the best regional produce combining pioneer day food preparation. Then dinner which was a delightful restaurant with a taste sensation of local Barossa wine and amazing food. Day 3 - Adelaide, most of us visited the Adelaide Food markets and carried on with our food and wine themed few days, then to be rolled onto the plane. It was great being able to experience Qatar Airways first hand, their Business Class "Q-suites" certainly would not disappoint anyone. The buzz and excitement from our group was high, so much positivity and enjoyment of all getting together, finally after 3 years.

Please get in touch to enquire about the fabulous cruise specials that I have as a certified CLIA cruise agent for cruise month, there are too many to list here. Tanya Franklin - The Travel Brokers, email [tanya@ttb.co.nz](mailto:tanya@ttb.co.nz) or phone 021 254 9169.



# Burnetts

## SEPTIC & WATER TANK CLEANING

YOUR SEPTIC TANK SHOULD BE CLEANED EVERY 3 YEARS (AVERAGE FAMILY OF 4)  
WE SERVICE ALL AREAS  
PROMPT, PROFESSIONAL SERVICE WITH 30 YEARS EXPERIENCE

**PHONE: 09 412 9210 OR 027 492 4494**





**THE TRAVEL BROKERS**  
a member of  


**Tanya Franklin**  
Travel Broker

T +64 9 411 9105  
M +64 21 254 9169  
[tanya.franklin@ttb.co.nz](mailto:tanya.franklin@ttb.co.nz)

Waimauku, Auckland  
New Zealand

[thetravelbrokers.co.nz/tanyafranklin](http://thetravelbrokers.co.nz/tanyafranklin)

# Area Columnists

## New Riverhead industrial units for lease or sale

Auckland industrial units are in short supply, so a new Riverhead development provides a solution for occupants seeking a functional workspace.

The development is at 15 Timber Place, Riverhead and consists of six two-storey industrial units, of about 227 square metres each. There is showroom and warehouse space on the ground floor and 38sqm of office space on the first floor.

The units have high stud, clear span, tilt slab construction with roller door access and include dedicated car parking. When complete, there will be landscaping and pedestrian access to the road frontage.

The property will be ready for occupation by the end of the year. One unit is for sale, while the remainder are available for lease.

This is one of Gibson O'Connor Construction's turnkey design and build developments - the company a privately owned New Zealand construction business with a proven track history of success for more than 50 years.

Less than 10 minutes from the Westgate commercial hub, there's a range of high-profile amenities that are readily accessible, while the improving motorway network through the NorthWest of Auckland adds to the connectivity.

Colliers Directors Ryan de Zwart, Caroline Cornish, and Matt Prentice have been appointed to lease the units and are taking expressions of interest.

The properties are being constructed with a modern design and will prove highly functional for future occupants, says Ryan who is Associate Director of Industrial Sales and Leasing at Colliers.

"These units be suitable for contractors such as plumbers, electricians, or businesses with smaller warehousing requirement or those businesses with additional warehouse for product storage," he says.

"Being much more than just a contractor, Gibson O'Connor understand the construction process from conception to completion and has the ability to create desirable and sought-after buildings."

The wider NorthWest of Auckland has undergone considerable change during the past decade and the industrial area of Riverhead has long been viewed as a growth location, says Caroline, Associate Director of Investment Sales at Colliers.

"Following the formation of the Auckland super city in 2010, Westgate was identified as one of 10 Metropolitan Centres in the Auckland region and the subsequent Unitary Plan allowed the rezoning of surrounding areas, which massively increased the importance of Westgate as a retail and commercial centre," she says.

"There is also substantial residential development going on throughout West Auckland in suburbs such as Kumeu-Huapai, Red Hills, Hobsonville Point, and Riverhead."

Industrial vacancy rates across Auckland remain incredibly low through a lack of supply and heightened demand, says Matt, Director of Industrial Sales and Leasing at Colliers.

Contact Ryan on 021 575 001, Caroline on 021 390 759 or Matt on 021 464 904.

## Christmas bargains at The Vintage Shop

The Vintage Shop in the historic Pomona hall adjacent to the Kumeu Community Centre is well-stocked with quality items suitable as Christmas gifts.

A team of volunteers ensure items are tastefully displayed with marked prices. Sets of crockery, silverware, mantle-piece ornaments, crystal sets, linen and small items of furniture and one-off vintage items are on display at very competitive prices.

Most of the items have been donated to the shop, often originating from deceased estates.

The Vintage Shop is a Huapai-Kumeu Lions fund-raising project managed by a group of volunteer women who have become very proficient at valuing and marketing the stock on the shelves.

Lions' members are very appreciative of the volunteers' interest and work enabling the club to give funding support to worthy local organisations.

Huapai-Kumeu Lions' most recent project was its Book Fair, assisted by the Waimauku Scout Group which received \$2000 from the Book Fair profit to assist with the building of its Scout Den.

**Graham McIntyre**  
LICENSED SALESPERSON  
BRAND & TERRITORY OWNER





**M** 027 632 0421  
**P** 09 412 9602  
**FP** 0800 900 700  
**E** graham.mcintyre@mikepero.com  
[www.mikepero.com](http://www.mikepero.com)

Mike Pero Real Estate Ltd. Licensed REAA (2008)  
327 Main Road, Kumeu, Auckland  
2 Clark Road, Hobsonville, Auckland



### New industrial complex – Riverhead

**For Lease / For Sale 227m<sup>2</sup>**  
**New Industrial units**  
**Completed end 2022**  
**Call now!**

**Ryan de Zwart**  
021 575 001

**Caroline Cornish**  
021 390 759

**Matt Prentice**  
021 464 904

[colliers.co.nz/p-NZL67020880](http://colliers.co.nz/p-NZL67020880)

Colliers NZ Limited  
Licensed REAA 2008



**\$ 69.99** EACH

Glenlivet 12YO 700ml Glenfiddich 12YO 700ml



**\$ 53.99** EACH

Tanqueray 1L Bombay Sapphire 1L



**\$ 53.99** EACH

Wild Turkey 1L Jameson Whiskey 1L



**\$ 49.99** EACH

St Remy Brandy 1L Jim Beam 1.125L

**SINGLE MALT SALE NOW**



**\$ 57.99** EACH

Appleton Est Rum 1L Jack Daniel's 1L



**\$ 49.99** EACH

Chivas Regal 12YO 700ml Johnnie Walker Black Label 12YO 700ml



**\$ 44.99** EACH

Bacardi Rums 1L Capt. Morgan Rums 1L



**\$ 44.99** EACH

Coruba Rums 1L Baileys Irish Cream 1L



**\$ 39.99** EACH

Malibu 1L Coconut Rum Kahlua 1L Coffee Liqueur



**\$ 39.99** EACH

Smirnoff Vodka 1L Gordon's Gin 1L



**\$ 39.99** EACH

Bell's Scotch 1L Dewar's Scotch 1L



**\$ 39.99** EACH

Woodstock Bourbon 1L Black Heart Rum 1L

**KUMEU CELLARS**



Deals expire December 31, 2022  
No Service if Indicated or without ID



**\$ 44.99** EACH

Johnnie Walker RED 1L Chatelle Brandy 1L



**\$ 44.99** EACH

Canadian Club 1L Absolut Vodka 1L



**\$ 39.99** EACH

Seagers Gins 1L Ivanov Vodka 1L

**Super LOW Prices || OPEN till LATE || Kumeu Village Shops, 88A Main Road, Kumeu**